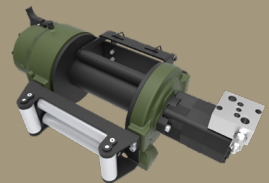
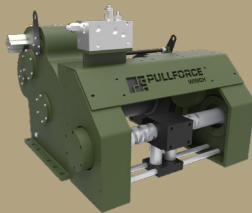
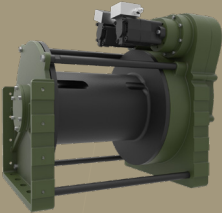




HYDRAULIC TOWING AND RECOVERY WINCH CATALOGUE





PULLFORCE **WINCH**

Pullforce was established as a winch brand of Hidroforce company. Pullforce commenced its R&D studies in 2014 in order to create a well-known and reliable towing and recovery winch brand on the regional and global levels, based on the rich experience of its founders in the hydraulic industry.

Since its establishment, Pullforce has focused on continuously enhancing the quality of its products by constantly improving its production facilities and equipment, using quality component brands and raw materials in the industry, and constantly improving the skills and qualification of its personnel.

A well-organized production process with its expert staff, certified quality control management and trust-based relations with customers from different sectors, - all this helps Pullforce move towards their goal of production of reliable towing and recovery winches.

After the onset of its R&D projects in 2014, Pullforce started the production of civil vehicle winches in 2016. Our company, which has reached a significant share in the civilian vehicle winch market, initiated in 2017 R&D studies in towing and recovery winches produced in accordance with stricter military standards for army vehicles. In 2019, Pullforce successfully delivered its first military project.

Pullforce promotes itself as the choice of those who are looking for premium equipment in recovery and towing. Pullforce team's extensive expertise and dedication to quality is the guarantee that our products will handle any challenging task.



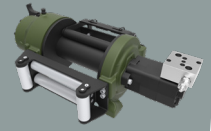
Pullforce is a winch brand of Hidroforce

WINCH MODELS

Light Series

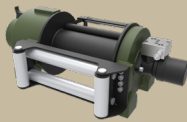


PF-LS 07-00



PF-LS 09-00

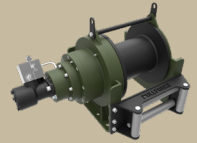
Medium Series



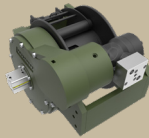
PF-MS 12-00



PF-MS 12-00-S



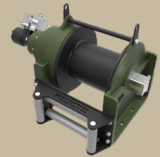
PF-MS 15-00



PF-MS 15-00-S



PF-MS 15-00-L



PF-MS 18-00

Special Series



PF-SS 30-00



PF-SS 35-00

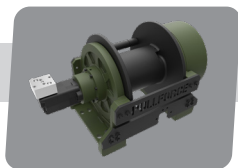


PF-SS 40-00



PF-SS 45-00

Heavy Series



PF-HS 22-00



PF-HS 25-00



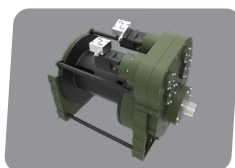
PF-HS 30-00



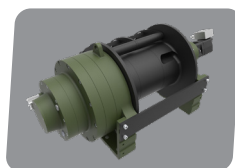
PF-HS 35-00



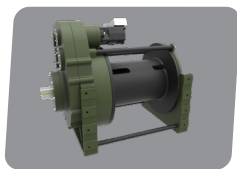
PF-HS 35-00-L



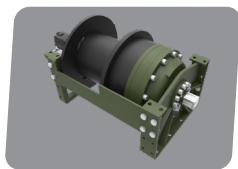
PF-HS 40-00



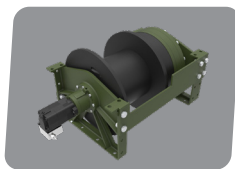
PF-HS 40-00-L



PF-HS 45-00



PF-HS 45-00-L

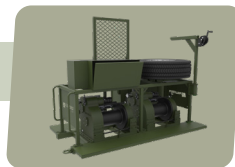


PF-HS 50-00-L

Military Series



PF-MLS 30-00-D



PF-MLS 35-00-D

Pullforce Winch Hydraulics Design

Recovery winches

- Up to 45 tons towing capacity
- Up to 85 m rope length
- Compatible with different type of vehicle
- Single/double towing speed option
- Roller fairleads and pressure rollers
- Optional pneumatic freespool

Fixed/variable displacement hydraulic pump

- Circuit element is powered by piston or gear pump
- 30-120 cm³/rev displacement
- Up to 210 bar pressure

Fixed displacement hydraulic motos and motor valves

- Gear orbit motor
- 50-500 cc displacement
- Up to 210 bar pressure

Electro/hydraulic control valves

- Manual or electro-hydraulic activation
- Proportional or on-off type



ECU communication and IQAN monitoring and control units

- Automotive standards – IP67 Protection
- Compatible with the CAN software network

Radio control systems

- Automotive standards – IP67 Protection
- Design suitable for applications in various areas and situations

Hydraulic oil tank / oil coolers / filters

- Temperature control and oil quality
- Available upon request and adapted to project requirements

Towing winches

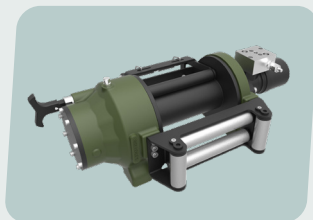
- Up to 45 tons towing capacity
- Up to 18m/min rope towing speed
- Up to 85 m rope length
- Compatible with different type of vehicle
- Single or double set
- Double/single towing speed options
- Roller fairleads and pressure rollers
- Optional pneumatic freespool
- Automatic fairlead rollers

Pullforce Quality

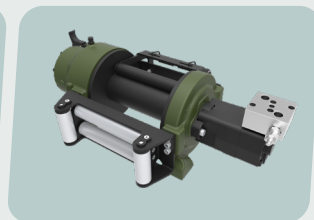
As a company, we apply the ISO 9001-2015 quality management system. Our efforts to present a world-class product to our customers begin in the early stages of the production process and continue further in the after-sales periods. Our constant attention to quality ensures that we produce the best products.



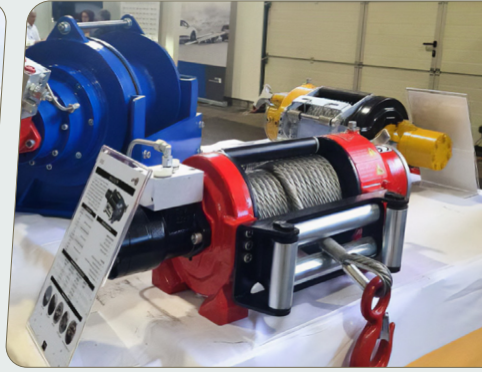
LIGHT SERIES WINCHES



PF-LS 07-00



PF-LS 09-00



Description

Towing and recovery winch for cars and commercial vehicles. This effective and durable model has a planetary gear design, disc brake system and reinforced aluminum cast body ready for challenging tasks. Different configurations are available upon request. Fully compliant with **EN 14492**. Additional equipment and accessories are available as well.



Specifications

Maximum Pulling Capacity	: 7000 kg / 15432 lbs
Maximum Rope Length	: 30 m / 98.4 ft
Recommended Wire Rope	: Ø14 mm / Ø9/16"
Hydraulic Motor	: 400 cc / 24.4 in ³
Maximum Pump Flow Rate	: 60 l/min / 15.85 gal/min
Max Working Pressure	: 175 bar / 2538 psi
Weight	: 85 kg / 188 lbs

Additional Equipment

Standard package:

- Rope
- Roller fairlead
- Pressure roller
- Manual freespool
- Hydraulic inlet G 1/2"

Optional:

- Pneumatic freespool
- Radio control system
- ECU & IQAN equipment
- M12 mounting bolts
- Hydraulic control valve with manual lever

Line Pull and Line Speed Performance

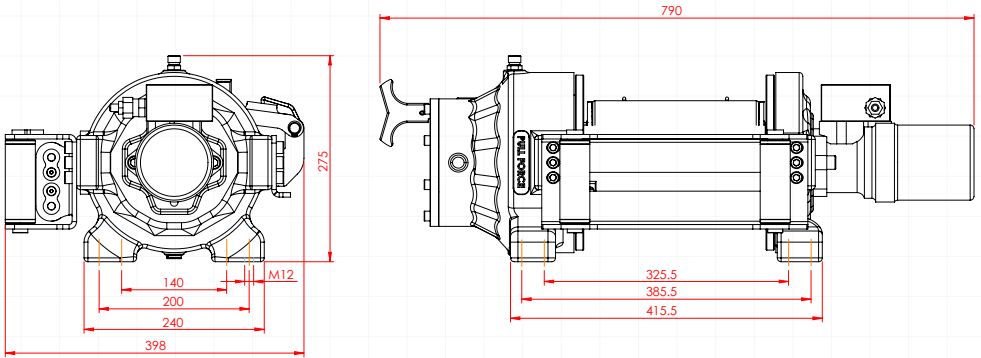
Winding layer	Pulling capacity (kg / lbs)	Rope speed (m/min - ft/min)	Rope length (m/ft)
1	7000 / 15432	10.4 / 34.1	5.8 / 18.9
2	6261 / 13805	13.1 / 42.8	13 / 42.6
3	5230 / 11531	15.7 / 51.5	21.7 / 71.2
4	4490 / 9900	18.4 / 60.3	31.9 / 104.7



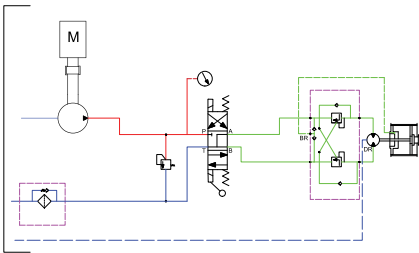
These winches should not be used for lifting and there should be at least 5 wraps of wire rope on the drum. The data shown are for maximum pressure and maximum flow and should be used as a reference only.

PULLFORCE reserves the right to change the specified data without prior notice.

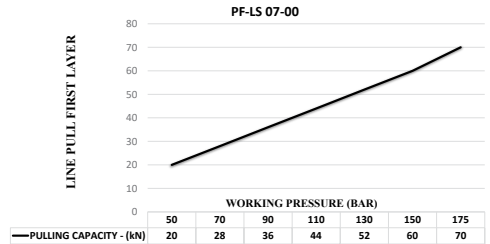
Dimensions



Hydraulic Circuit



Hydraulic Performance



Features

- Gear reduction :** 5.2 : 1
- Gear type :** Single stage planetary
- Winch construction :** Aluminum cast body reinforced with heat-treatment
- Braking :** Negative hydraulic disc brake system
- Drum rotation :** Clockwise, or counter clockwise rotation as required
- Roller guides :** Commercial type with large diameter rollers and grease ways
- Free spooling :** Standard manual lever freespool. Optional pneumatic freespool
- Control valve :** The direction control valves to be used must be A, B, and T. The A and B lines must be open to the T (Tank) line.

Application Areas



Agricultural and Forestry Vehicles



Disaster Relief vehicles



Tow Trucks



Military Vehicles



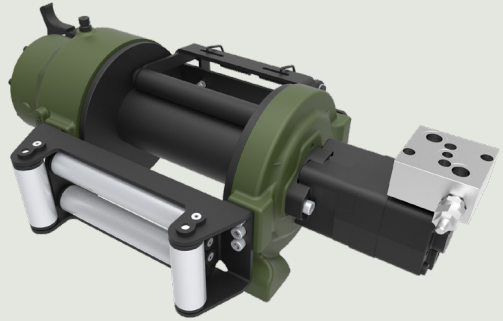
Offroad Vehicles



Each new winch is guaranteed against defects in workmanship and material defects for a period of 24 months from date of purchase. Wire ropes are not included under warranty.

Description

Towing and recovery winch for cars and commercial vehicles. This effective and durable model has a planetary gear design, disc brake system and re-inforced aluminum cast body ready for challenging tasks. Different configurations are available upon request. Fully compliant with **EN 14492**. Additional equipment and accessories are available as well.



Specifications

Maximum Pulling Capacity	: 9000 kg / 19841 lbs
Maximum Rope Length	: 30 m / 98.4 ft
Recommended Wire Rope	: Ø14 mm / Ø9/16"
Hydraulic Motor (High Torque)	: 400 cc / 24.4 in ³
Maximum Pump Flow Rate	: 75 l/min / 19.81 gal/min
Max Working Pressure	: 200 bar / 2900 psi
Weight	: 85 kg / 188 lbs

Additional Equipment

Standard package:

- Rope
- Roller fairlead
- Pressure roller
- Manual freespool
- Hydraulic inlet G 1/2"

Optional:

- Pneumatic freespool
- Radio control system
- ECU & IQAN equipment
- M12 mounting bolts
- Hydraulic control valve with manual lever

Line Pull and Line Speed Performance

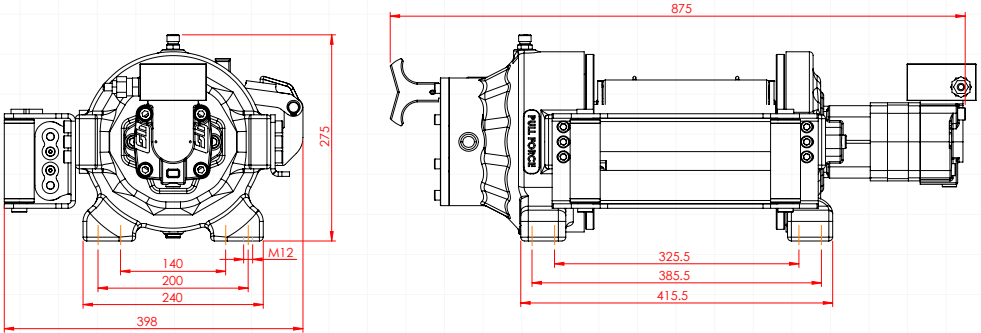
Winding layer	Pulling capacity (kg / lbs)	Rope speed (m/min - ft/min)	Rope length (m/ft)
1	9000 / 19841	13 / 42.6	5.7 / 18.9
2	7164 / 15793	16.3 / 53.5	13 / 42.6
3	5950 / 13117	19.6 / 64.5	21.7 / 71.2
4	5088 / 11217	23 / 75.4	31.9 / 104.7



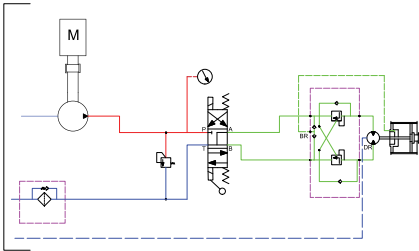
These winches should not be used for lifting and there should be at least 5 wraps of wire rope on the drum. The data shown are for maximum pressure and maximum flow and should be used as a reference only.

PULLFORCE reserves the right to change the specified data without prior notice.

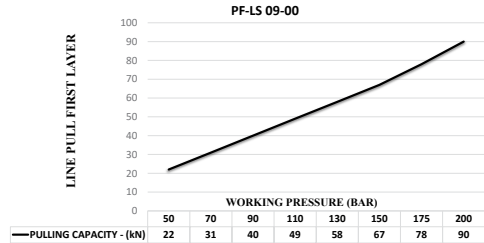
Dimensions



Hydraulic Circuit



Hydraulic Performance



Features

- Gear reduction :** 5.2 : 1
- Gear type :** Single stage planetary
- Winch construction :** Aluminum cast body reinforced with heat-treatment
- Braking :** Negative hydraulic disc brake system
- Drum rotation :** Clockwise, or counter clockwise rotation as required
- Roller guides :** Commercial type with large diameter rollers and grease ways
- Free spooling :** Standard manual lever freespool. Optional pneumatic freespool
- Control valve :** The direction control valves to be used must be A, B, and T. The A and B lines must be open to the T (Tank) line.

Application Areas



Agricultural and Forestry Vehicles



Disaster Relief vehicles



Tow Trucks



Military Vehicles



Offroad Vehicles



Each new winch is guaranteed against defects in workmanship and material defects for a period of 24 months from date of purchase. Wire ropes are not included under warranty.

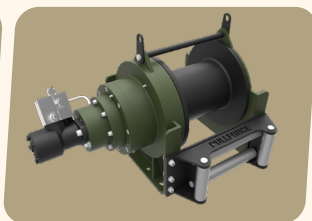
MEDIUM SERIES WINCHES



PF-MS 12-00



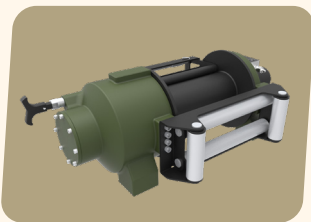
PF-MS 12-00-S



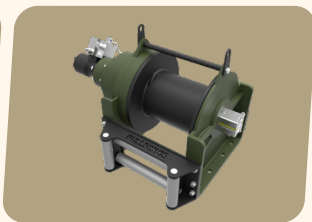
PF-MS 15-00



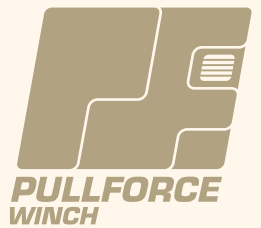
PF-MS 15-00-S



PF-MS 15-00-L

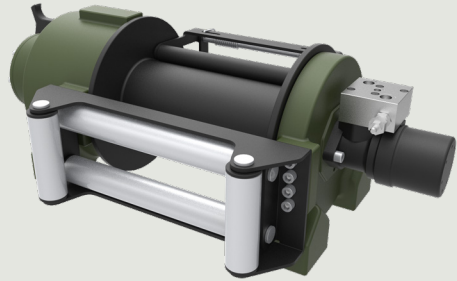


PF-MS 18-00



Description

Towing and recovery winch for commercial and service vehicles with a vertically positioned motor. This model has a rigid planetary gear, disc brake system and ductile iron body ready for challenging tasks. Different configurations are available upon request. Fully compliant with **EN 14492**. Additional equipment and accessories are available as well.



Specifications

Maximum Pulling Capacity	: 12000 kg / 26455 lbs
Maximum Rope Length	: 54 m / 177.1 ft
Recommended Wire Rope	: Ø16 mm / Ø5/8"
Hydraulic Motor	: 200 cc / 12 in ³
Maximum Pump Flow Rate	: 60 l/min / 15.8 gal/min
Max Working Pressure	: 175 bar / 2537 psi
Weight	: 185 kg / 407.85 lbs

Additional Equipment

Standard package:

- Rope
- Roller fairlead
- Pressure roller
- Pneumatic freespool
- Hydraulic inlet G 1/2"

Optional:

- Radio control system
- ECU & IQAN equipment
- M16 mounting bolts
- Hydraulic control valve with manual lever

Line Pull and Line Speed Performance

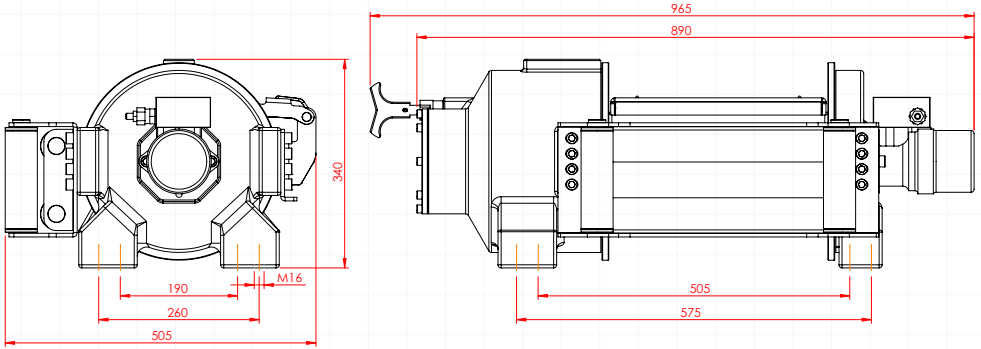
Winding layer	Pulling capacity (kg / lbs)	Rope speed (m/min - ft/min)	Rope length (m/ft)
1	12000 / 26455	5.6 / 18.4	10.5 / 34.4
2	9988 / 22020	6.7 / 22.1	23.1 / 75.7
3	8554 / 18858	7.8 / 25.8	37.8 / 123.9
4	7480 / 16490	9 / 29.5	54.6 / 179



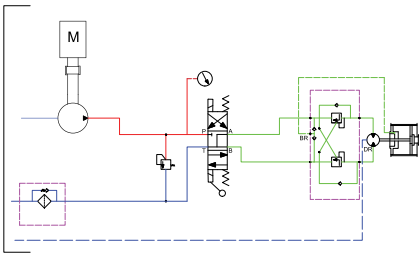
These winches should not be used for lifting and there should be at least 5 wraps of wire rope on the drum. The data shown are for maximum pressure and maximum flow and should be used as a reference only.

PULLFORCE reserves the right to change the specified data without prior notice.

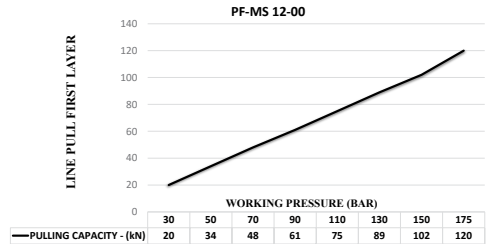
Dimensions



Hydraulic Circuit



Hydraulic Performance



Features

- Gear reduction : 28 : 1
- Gear type : Two stage planetary
- Winch construction : Ductile iron body reinforced with heat-treatment
- Braking : Negative hydraulic disc brake system
- Drum rotation : Clockwise, or counter clockwise rotation as required
- Roller guides : Commercial type with large diameter rollers and grease ways
- Free spooling : Standard pneumatic freespool. Optional pneumatic freespool
- Control valve : The direction control valves to be used must be A, B, and T. The A and B lines must be open to the T (Tank) line.

Application Areas



Towing and Recovery Vehicles



Heavy Tow Trucks



Agricultural and Forestry Vehicles



Military Vehicles



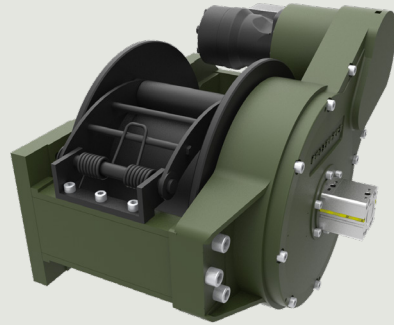
Trailers



Each new winch is guaranteed against defects in workmanship and material defects for a period of 24 months from date of purchase. Wire ropes are not included under warranty.

Description

Towing and recovery winch for commercial and service vehicles with a vertically positioned motor. This model has a rigid planetary gear, disc brake system and ductile iron body ready for challenging tasks. Different configurations are available upon request. Fully compliant with **EN 14492**. Additional equipment and accessories are available as well.



Specifications

Maximum Pulling Capacity	: 12000 kg / 26455 lbs
Maximum Rope Length	: 43 m / 141.1 ft
Recommended Wire Rope	: Ø16 mm / Ø5/8"
Hydraulic Motor	: 200 cc / 12.2 in ³
Maximum Pump Flow Rate	: 60 l/min / 15.85 gal/min
Max Working Pressure	: 175 bar / 2538 psi
Weight	: 210 kg / 463 lbs

Additional Equipment

Standard package:

- Rope
- Roller fairlead
- Pressure roller
- Pneumatic freespool
- Hydraulic inlet G 1/2"

Optional:

- Radio control system
- ECU & IQAN equipment
- M16 mounting bolts
- Hydraulic control valve with manual lever

Line Pull and Line Speed Performance

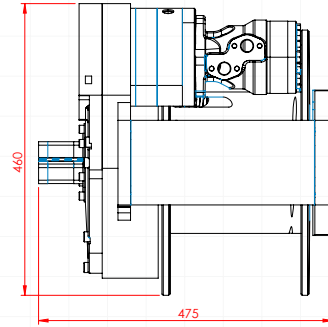
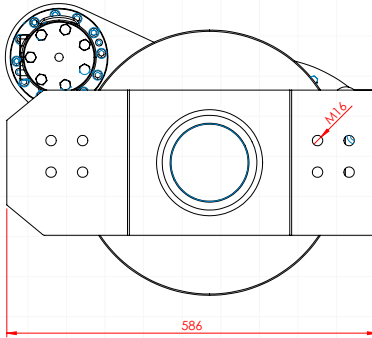
Winding layer	Pulling capacity (kg / lbs)	Rope speed (m/min - ft/min)	Rope length (m/ft)
1	12000 / 26455	5.8 / 19	8.8 / 28.9
2	10451 / 23041	6.6 / 21.9	10.1 / 33.2
3	9257 / 20408	7.5 / 24.7	11.4 / 37.5
4	8307 / 18315	8.4 / 27.5	12.7 / 41.7



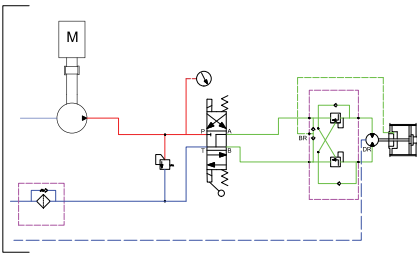
These winches should not be used for lifting and there should be at least 5 wraps of wire rope on the drum. The data shown are for maximum pressure and maximum flow and should be used as a reference only.

PULLFORCE reserves the right to change the specified data without prior notice.

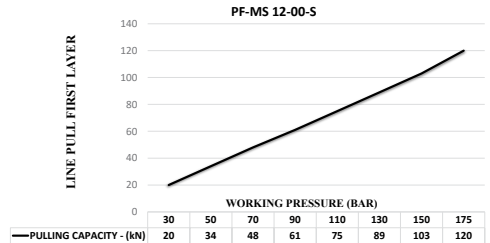
Dimensions



Hydraulic Circuit



Hydraulic Performance



Features

- Gear reduction : 41.25:1
- Gear type : Two stage planetary
- Winch construction : Ductile iron body reinforced with heat-treatment
- Braking : Negative hydraulic disc brake system
- Drum rotation : Clockwise, or counter clockwise rotation as required
- Roller guides : Commercial type with large diameter rollers and grease ways
- Free spooling : Standard pneumatic freespool.
- Control valve : The direction control valves to be used must be A, B, and T. The A and B lines must be open to the T (Tank) line.

Application Areas



Towing and Recovery Vehicles



Heavy Tow Trucks



Agricultural and Forestry Vehicles



Military Vehicles



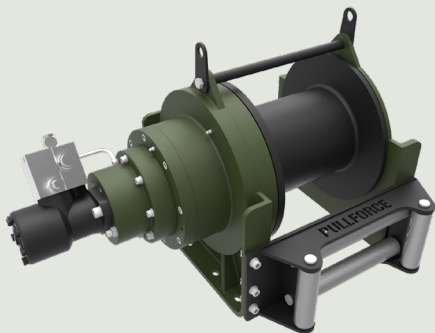
Trailers



Each new winch is guaranteed against defects in workmanship and material defects for a period of 24 months from date of purchase. Wire ropes are not included under warranty.

Description

Towing and recovery winch for commercial and service vehicles with a vertically positioned motor. This model has a rigid planetary gear, disc brake system and ductile iron body ready for challenging tasks. Different configurations are available upon request. Fully compliant with **EN 14492**. Additional equipment and accessories are available as well.



Specifications

Maximum Pulling Capacity	: 15000 kg / 33069 lbs
Maximum Rope Length	: 48 m / 157.4 ft
Recommended Wire Rope	: Ø18 mm / Ø7/10"
Hydraulic Motor	: 200 cc / 12.2 in ³
Maximum Pump Flow Rate	: 60 l/min / 15.85 gal/min
Max Working Pressure	: 175 bar / 2538 psi
Weight	: 185 kg / 408 lbs

Additional Equipment

Standard package:

- Rope
- Roller fairlead
- Pressure roller
- Pneumatic freespool
- Hydraulic inlet G 1/2"

Optional:

- Radio control system
- ECU & IQAN equipment
- M14 mounting bolts
- Hydraulic control valve with manual lever

Line Pull and Line Speed Performance

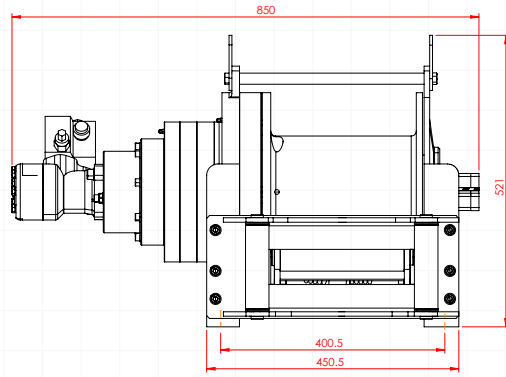
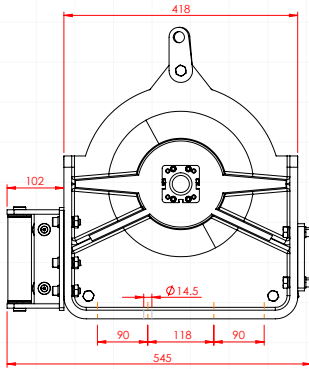
Winding layer	Pulling capacity (kg / lbs)	Rope speed (m/min - ft/min)	Rope length (m/ft)
1	15000 / 33069	5 / 16.40	8.9 / 29.3
2	12791 / 28200	5.86 / 19.23	19.4 / 63.7
3	11149 / 24580	6.73 / 22.06	31.4 / 103.1
4	9881 / 21784	7.59 / 24.90	48 / 157.5



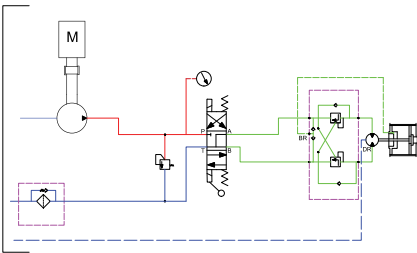
These winches should not be used for lifting and there should be at least 5 wraps of wire rope on the drum. The data shown are for maximum pressure and maximum flow and should be used as a reference only.

PULLFORCE reserves the right to change the specified data without prior notice.

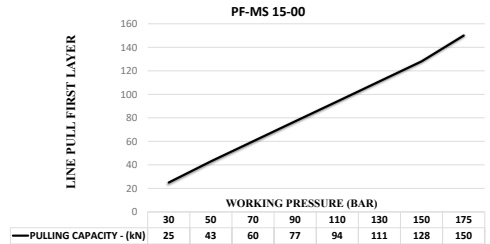
Dimensions



Hydraulic Circuit



Hydraulic Performance



Features

- Gear reduction : 41.25:1
- Gear type : Two stage planetary
- Winch construction : Ductile iron body reinforced with heat-treatment
- Braking : Negative hydraulic disc brake system
- Drum rotation : Clockwise, or counter clockwise rotation as required
- Roller guides : Commercial type with large diameter rollers and grease ways
- Free spooling : Standard pneumatic freespool. Optional pneumatic freespool
- Control valve : The direction control valves to be used must be A, B, and T. The A and B lines must be open to the T (Tank) line.

Application Areas



Towing and Recovery Vehicles



Heavy Tow Trucks



Agricultural and Forestry Vehicles



Military Vehicles



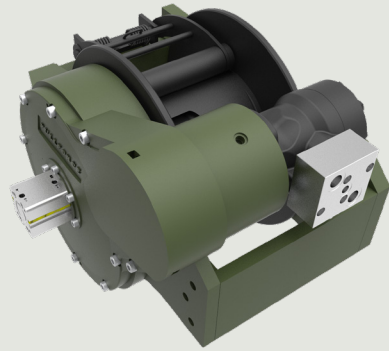
Trailers



Each new winch is guaranteed against defects in workmanship and material defects for a period of 24 months from date of purchase. Wire ropes are not included under warranty.

Description

Towing and recovery winch for commercial and service vehicles with a vertically positioned motor. This model has a rigid planetary gear, disc brake system and ductile iron body ready for challenging tasks. Different configurations are available upon request. Fully compliant with **EN 14492**. Additional equipment and accessories are available as well.



Specifications

Maximum Pulling Capacity	: 15000 kg / 33069 lbs
Maximum Rope Length	: 37 m / 121.3 ft
Recommended Wire Rope	: Ø18 mm / Ø7/10"
Hydraulic Motor	: 250 cc / 15.2 in ³
Maximum Pump Flow Rate	: 60 l/min / 15.85 gal/min
Max Working Pressure	: 175 bar / 2538 psi
Weight	: 215 kg / 473.9 lbs

Additional Equipment

Standard package:

- Rope
- Roller fairlead
- Pressure roller
- Pneumatic freespool
- Hydraulic inlet G 1/2"

Optional:

- Radio control system
- ECU & IQAN equipment
- M16 mounting bolts
- Hydraulic control valve with manual lever

Line Pull and Line Speed Performance

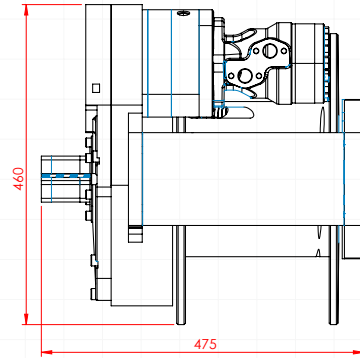
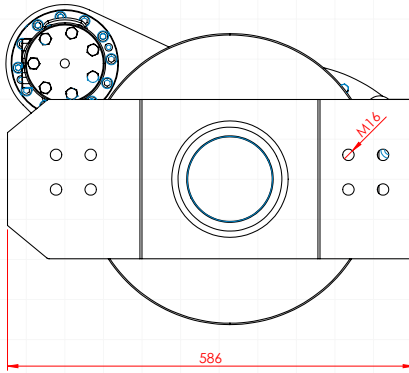
Winding layer	Pulling capacity (kg / lbs)	Rope speed (m/min - ft/min)	Rope length (m/ft)
1	15000 / 33069	4.6 / 15.2	7.5 / 24.7
2	13064 / 28802	5.3 / 17.5	8.7 / 28.7
3	11571 / 25510	6 / 19.7	10 / 32.8
4	10384 / 22894	6.7 / 22	11.2 / 36.9



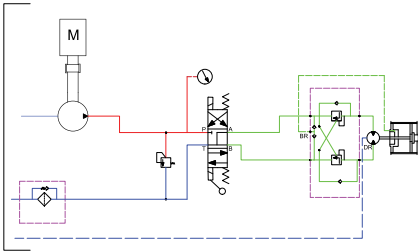
These winches should not be used for lifting and there should be at least 5 wraps of wire rope on the drum. The data shown are for maximum pressure and maximum flow and should be used as a reference only.

PULLFORCE reserves the right to change the specified data without prior notice.

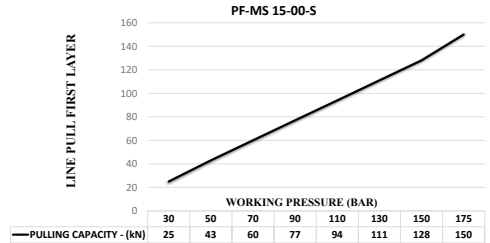
Dimensions



Hydraulic Circuit



Hydraulic Performance



Features

- Gear reduction : 41.25:1
- Gear type : Two stage planetary
- Winch construction : Ductile iron body reinforced with heat-treatment
- Braking : Negative hydraulic disc brake system
- Drum rotation : Clockwise, or counter clockwise rotation as required
- Roller guides : Commercial type with large diameter rollers and grease ways
- Free spooling : Standard pneumatic freespool. Optional pneumatic freespool
- Control valve : The direction control valves to be used must be A, B, and T. The A and B lines must be open to the T (Tank) line.

Application Areas



Towing and Recovery Vehicles



Heavy Tow Trucks



Agricultural and Forestry Vehicles



Military Vehicles



Trailers



Each new winch is guaranteed against defects in workmanship and material defects for a period of 24 months from date of purchase. Wire ropes are not included under warranty.

Description

Towing and recovery winch for commercial and service vehicles with a vertically positioned motor. This model has a rigid planetary gear, disc brake system and ductile iron body ready for challenging tasks. Different configurations are available upon request. Fully compliant with **EN 14492**. Additional equipment and accessories are available as well.



Specifications

Maximum Pulling Capacity	: 15000 kg / 33069 lbs
Maximum Rope Length	: 51 m / 167 ft
Recommended Wire Rope	: Ø18 mm / Ø7/10"
Hydraulic Motor	: 250 cc / 15.2 in ³
Maximum Pump Flow Rate	: 60 l/min / 15.8 gal/min
Max Working Pressure	: 175 bar / 2537 psi
Weight	: 188 kg / 407.85 lbs

Additional Equipment

Standard package:

- Rope
- Roller fairlead
- Pressure roller
- Pneumatic freespool
- Hydraulic inlet G 1/2"

Optional:

- Radio control system
- ECU & IQAN equipment
- M16 mounting bolts
- Hydraulic control valve with manual lever

Line Pull and Line Speed Performance

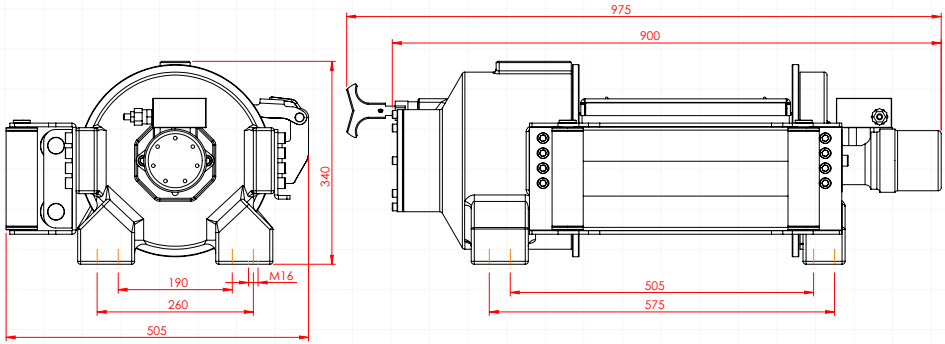
Winding layer	Pulling capacity (kg / lbs)	Rope speed (m/min - ft/min)	Rope length (m/ft)
1	15000 / 33069	4.5 / 14.9	9.5 / 31.3
2	12257 / 27022	5.6 / 18.2	21.2 / 69.6
3	10362 / 22844	6.6 / 21.6	35.1 / 115
4	8974 / 19785	7.6 / 24.9	51 / 167.3



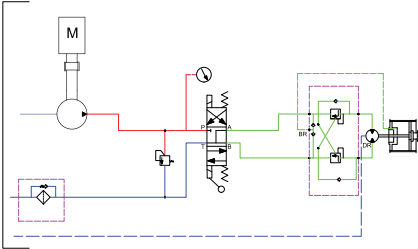
These winches should not be used for lifting and there should be at least 5 wraps of wire rope on the drum. The data shown are for maximum pressure and maximum flow and should be used as a reference only.

PULLFORCE reserves the right to change the specified data without prior notice.

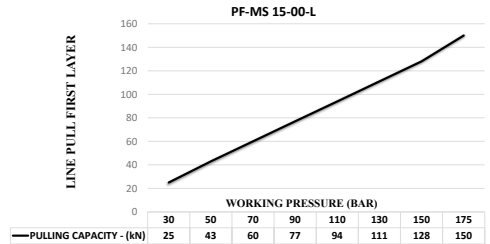
Dimensions



Hydraulic Circuit



Hydraulic Performance



Features

- Gear reduction : 28 : 1
- Gear type : Two stage planetary
- Winch construction : Ductile iron body reinforced with heat-treatment
- Braking : Negative hydraulic disc brake system
- Drum rotation : Clockwise, or counter clockwise rotation as required
- Roller guides : Commercial type with large diameter rollers and grease ways
- Free spooling : Standard pneumatic freespool. Optional pneumatic freespool
- Control valve : The direction control valves to be used must be A, B, and T. The A and B lines must be open to the T (Tank) line.

Application Areas



Towing and Recovery Vehicles



Heavy Tow Trucks



Agricultural and Forestry Vehicles



Military Vehicles



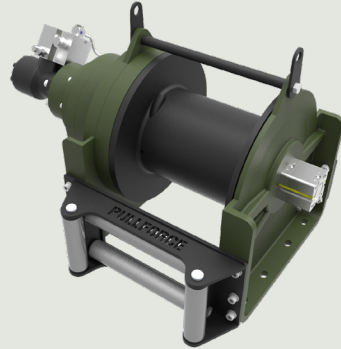
Trailers



Each new winch is guaranteed against defects in workmanship and material defects for a period of 24 months from date of purchase. Wire ropes are not included under warranty.

Description

Towing and recovery winch for commercial and service vehicles with a vertically positioned motor. This model has a rigid planetary gear, disc brake system and ductile iron body ready for challenging tasks. Different configurations are available upon request. Fully compliant with **EN 14492**. Additional equipment and accessories are available as well.



Specifications

Maximum Pulling Capacity	: 18000 kg / 39683 lbs
Maximum Rope Length	: 43 m / 141 ft
Recommended Wire Rope	: Ø20 mm / Ø25/32"
Hydraulic Motor	: 250 cc / 15.25 in ³
Maximum Pump Flow Rate	: 60 l/min / 15.85 gal/min
Max Working Pressure	: 175 bar / 2538 psi
Weight	: 205 kg / 452 lbs

Additional Equipment

Standard package:

- Rope
- Roller fairlead
- Pressure roller
- Pneumatic freespool
- Hydraulic inlet G 1/2"

Optional:

- Radio control system
- ECU & IQAN equipment
- M14 mounting bolts
- Hydraulic control valve with manual lever

Line Pull and Line Speed Performance

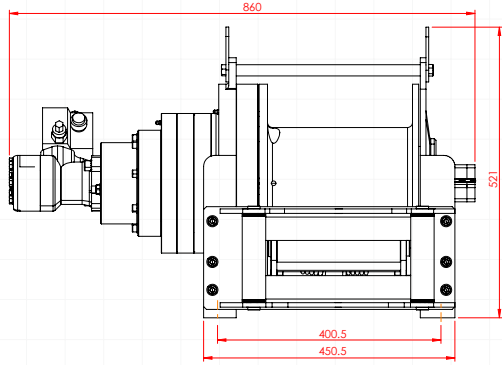
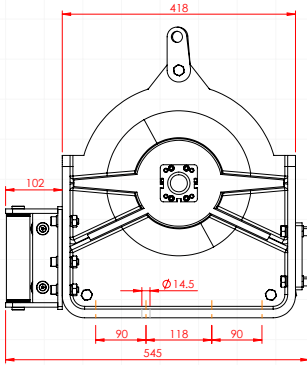
Winding layer	Pulling capacity (kg / lbs)	Rope speed (m/min - ft/min)	Rope length (m/ft)
1	18000 / 39683	4.04 / 13.25	8.3 / 27.3
2	15125 / 33346	4.80 / 15.76	18.2 / 59.8
3	13043 / 28754	5.57 / 18.28	29.7 / 97.5
4	11464 / 25274	6.34 / 20.80	42.8 / 140.4



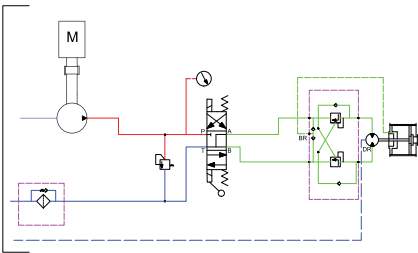
These winches should not be used for lifting and there should be at least 5 wraps of wire rope on the drum. The data shown are for maximum pressure and maximum flow and should be used as a reference only.

PULLFORCE reserves the right to change the specified data without prior notice.

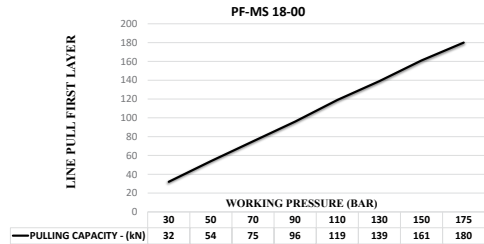
Dimensions



Hydraulic Circuit



Hydraulic Performance



Features

- Gear reduction :** 41.25:1
- Gear type :** Two stage planetary
- Winch construction :** Ductile iron body reinforced with heat-treatment
- Braking :** Negative hydraulic disc brake system
- Drum rotation :** Clockwise, or counter clockwise rotation as required
- Roller guides :** Commercial type with large diameter rollers and grease ways
- Free spooling :** Standard pneumatic freespool. Optional pneumatic freespool
- Control valve :** The direction control valves to be used must be A, B, and T. The A and B lines must be open to the T (Tank) line.

Application Areas



Towing and Recovery Vehicles



Heavy Tow Trucks



Agricultural and Forestry Vehicles



Military Vehicles

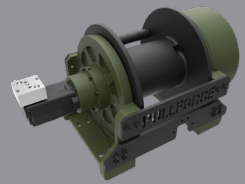


Trailers

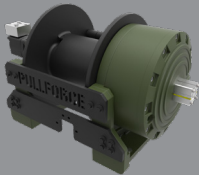


Each new winch is guaranteed against defects in workmanship and material defects for a period of 24 months from date of purchase. Wire ropes are not included under warranty.

HEAVY SERIES WINCHES



PF-HS 22-00



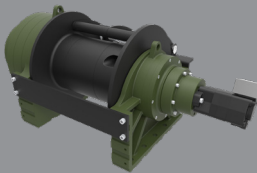
PF-HS 25-00



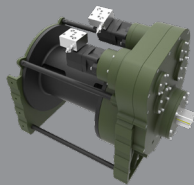
PF-HS 30-00



PF-HS 35-00



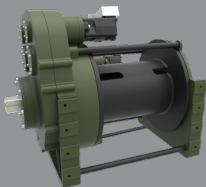
PF-HS 35-00-L



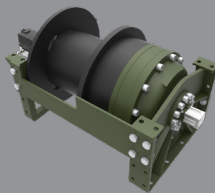
PF-HS 40-00



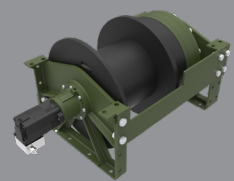
PF-HS 40-00-L



PF-HS 45-00



PF-HS 45-00-L

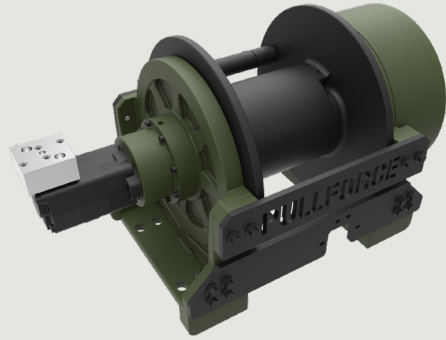


PF-HS 50-00-L



Description

Towing and recovery winch for commercial and service vehicles. This model has a rigid planetary gear, disc brake system and ductile iron body ready for challenging tasks. Different configurations are available upon request. Fully compliant with **EN 14492**. Additional equipment and accessories are available as well.



Specifications

Maximum Pulling Capacity	: 22000 kg / 48501 lbs
Maximum Rope Length	: 63 m / 206 ft
Recommended Wire Rope	: Ø22 mm / Ø7/8"
Hydraulic Motor (High Torque)	: 250 cc / 15.2 in ³
Maximum Pump Flow Rate	: 75 l/min / 19.81 gal/min
Max Working Pressure	: 200 bar / 2900 psi
Weight	: 340 kg / 749.5 lbs

Additional Equipment

Standard package:

- Rope
- Roller fairlead
- Pressure roller
- Pneumatic freespool
- Hydraulic inlet G 1/2"

Optional:

- Radio control system
- ECU & IQAN equipment
- Double speed working mode
- Automatic roller fairlead
- M20 mounting bolts
- Hydraulic control valve with manual lever

Line Pull and Line Speed Performance

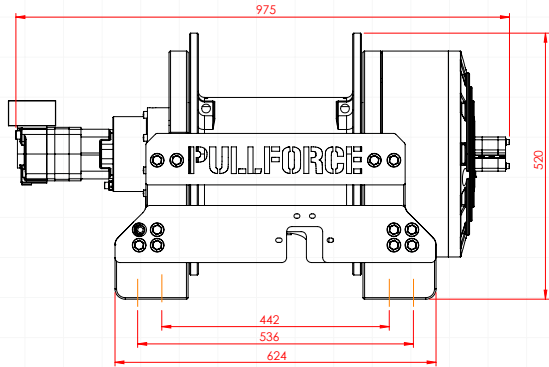
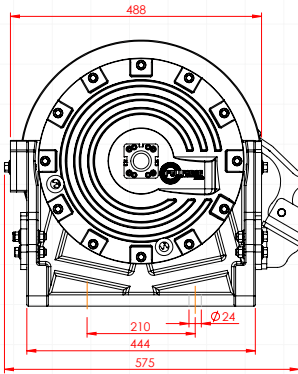
Winding layer	Pulling capacity (kg / lbs)	Rope speed (m/min - ft/min)	Rope length (m/ft)
1	20000 / 48502	4.6 / 15.1	9.2 / 30.1
2	18487 / 40756	5.5 / 18	20.1 / 65.8
3	15941 / 35144	6.4 / 20.9	32.7 / 107.3
4	14012 / 30890	7.2 / 23.7	47.1 / 154.5
5	12499 / 27555	8.1 / 26.6	63.2 / 207.4



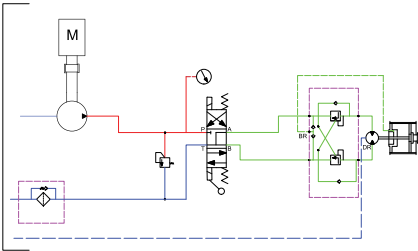
These winches should not be used for lifting and there should be at least 5 wraps of wire rope on the drum. The data shown are for maximum pressure and maximum flow and should be used as a reference only.

PULLFORCE reserves the right to change the specified data without prior notice.

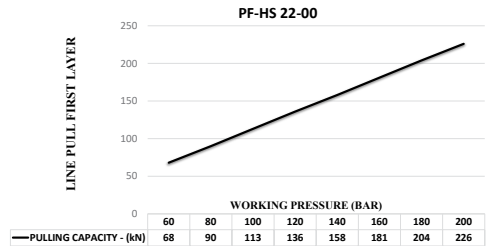
Dimensions



Hydraulic Circuit



Hydraulic Performance



Features

- Gear reduction : 49.7:1
- Gear type : Two stage planetary
- Winch construction : Ductile iron body reinforced with heat-treatment
- Braking : Negative hydraulic disc brake system
- Drum rotation : Clockwise, or counter clockwise rotation as required
- Roller guides : Commercial type with large diameter rollers and grease ways
- Free spooling : Standard pneumatic freespool
- Control valve : The direction control valves to be used must be A, B, and T. The A and B lines must be open to the T (Tank) line.

Application Areas



Heavy-Duty
Tow Trucks



Low-Bed
Semi-Trailers



Towing and
Recovery Vehicles



Trailers



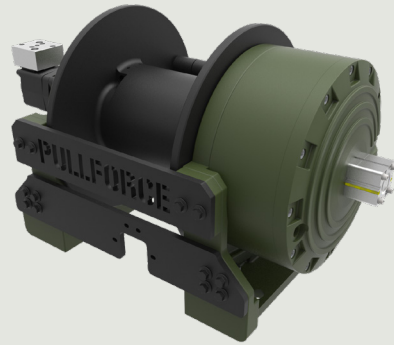
Offroad Trucks



Each new winch is guaranteed against defects in workmanship and material defects for a period of 24 months from date of purchase. Wire ropes are not included under warranty.

Description

Towing and recovery winch for commercial and service vehicles. This model has a rigid planetary gear, disc brake system and ductile iron body ready for challenging tasks. Different configurations are available upon request. Fully compliant with **EN 14492**. Additional equipment and accessories are available as well.



Specifications

Maximum Pulling Capacity	: 25000 kg / 55115 lbs
Maximum Rope Length	: 60 m / 196.8 ft
Recommended Wire Rope	: Ø24 mm / Ø15/16"
Hydraulic Motor (High Torque)	: 315 cc / 19.2 in ³
Maximum Pump Flow Rate	: 75 l/min / 19.81 gal/min
Max Working Pressure	: 200 bar / 2900 psi
Weight	: 345 kg / 760.5 lbs

Additional Equipment

Standard package:

- Rope
- Roller fairlead
- Pressure roller
- Pneumatic freespool
- Hydraulic inlet G 1/2"

Optional:

- Radio control system
- ECU & IQAN equipment
- Double speed working mode
- Automatic roller fairlead
- M20 mounting bolts
- Hydraulic control valve with manual lever

Line Pull and Line Speed Performance

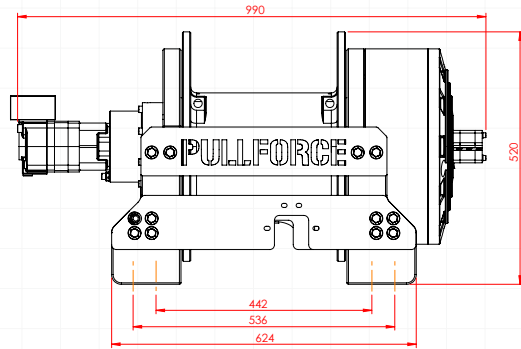
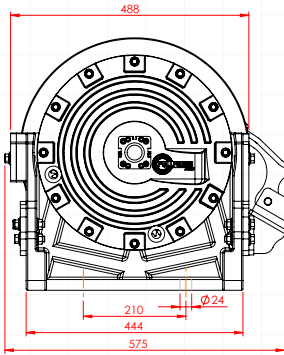
Winding layer	Pulling capacity (kg / lbs)	Rope speed (m/min - ft/min)	Rope length (m/ft)
1	25000 / 55116	2.9 / 9.5	8.5 / 27.8
2	20737 / 45718	3.5 / 11.5	18.7 / 61.3
3	17717 / 39059	4.1 / 13.4	30.6 / 100.5
4	15464 / 34093	4.7 / 15.4	44.3 / 145.4
5	13720 / 30247	5.3 / 17.4	60 / 196.8



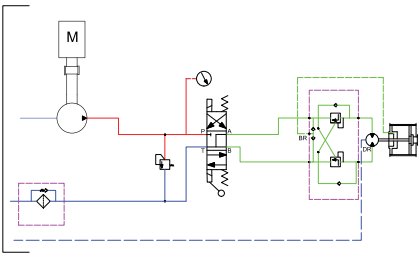
These winches should not be used for lifting and there should be at least 5 wraps of wire rope on the drum. The data shown are for maximum pressure and maximum flow and should be used as a reference only.

PULLFORCE reserves the right to change the specified data without prior notice.

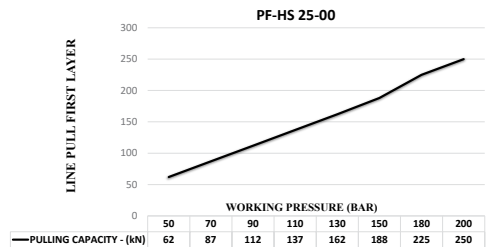
Dimensions



Hydraulic Circuit



Hydraulic Performance



Features

- Gear reduction : 49.7:1
- Gear type : Two stage planetary
- Winch construction : Ductile iron body reinforced with heat-treatment
- Braking : Negative hydraulic disc brake system
- Drum rotation : Clockwise, or counter clockwise rotation as required
- Roller guides : Commercial type with large diameter rollers and grease ways
- Free spooling : Standard pneumatic freespool
- Control valve : The direction control valves to be used must be A, B, and T. The A and B lines must be open to the T (Tank) line.

Application Areas



Heavy-Duty
Tow Trucks



Low-Bed
Semi-Trailers



Towing and
Recovery Vehicles



Trailers



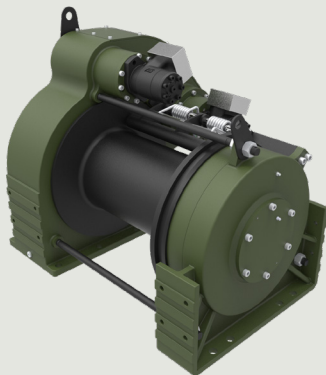
Offroad Trucks



Each new winch is guaranteed against defects in workmanship and material defects for a period of 24 months from date of purchase. Wire ropes are not included under warranty.

Description

Towing and recovery winch for commercial and service vehicles. This model has a rigid planetary gear, disc brake system and ductile iron body ready for challenging tasks. Different configurations are available upon request. Fully compliant with **EN 14492**. Additional equipment and accessories are available as well.



Specifications

Maximum Pulling Capacity : 30000 kg / 66138 lbs

Maximum Rope Length : 64 m / 209.9 ft

Recommended Wire Rope : Ø24 mm / Ø15/16"

Hydraulic Motor : 160 cc x2 / 9.76 in³ x2

Maximum Pump Flow Rate : 60 l/min / 15.85 gal/min

Max Working Pressure : 200 bar / 2900 psi

Weight : 465 kg / 1025 lbs

Additional Equipment

Standard package:

- Rope
- Roller fairlead
- Pressure roller
- Pneumatic freespool
- Hydraulic inlet G 1/2"

Optional:

- Radio control system
- ECU & IQAN equipment
- Double speed working mode
- Automatic roller fairlead
- M20 mounting bolts
- Hydraulic control valve with manual lever

Line Pull and Line Speed Performance

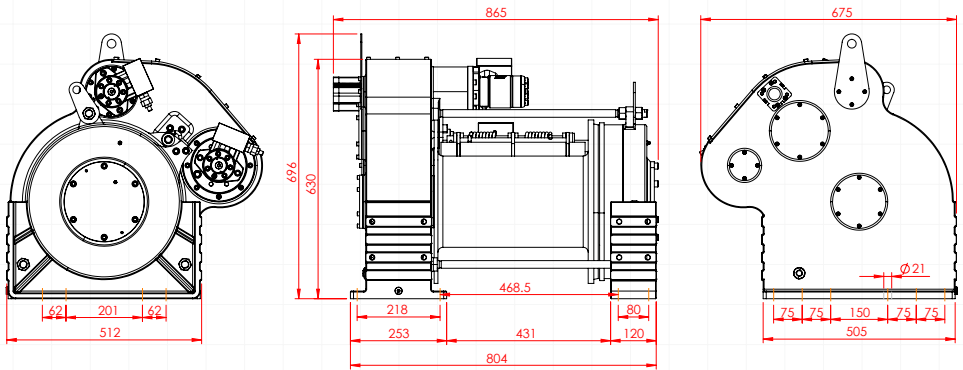
Winding layer	Pulling capacity (kg / lbs)	Rope speed (m/min - ft/min)	Rope length (m/ft)
1	30000 / 66139	2.7 / 8.9	12.5 / 41
2	25209 / 55577	3.2 / 10.6	27.4 / 89.7
3	21738 / 47923	3.7 / 12.3	44.6 / 146.3
4	19107 / 42123	4.3 / 14	64 / 210.6



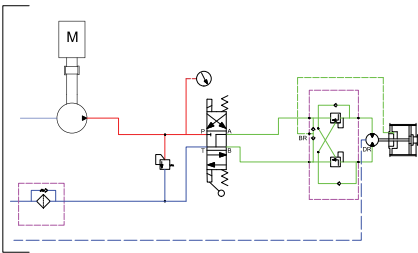
These winches should not be used for lifting and there should be at least 5 wraps of wire rope on the drum. The data shown are for maximum pressure and maximum flow and should be used as a reference only.

PULLFORCE reserves the right to change the specified data without prior notice.

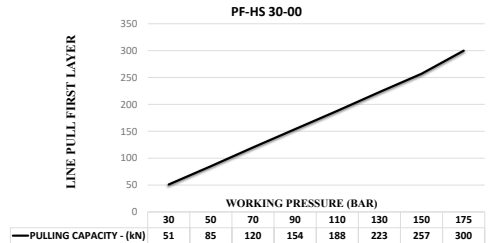
Dimensions



Hydraulic Circuit



Hydraulic Performance



Features

- Gear reduction :** 71.88:1
- Gear type :** Single stage planetary with specially designed gear system
- Winch construction :** Ductile iron body reinforced with heat-treatment
- Braking :** Negative hydraulic disc brake system
- Drum rotation :** Clockwise, or counter clockwise rotation as required
- Roller guides :** Commercial type with large diameter rollers and grease ways
- Free spooling :** Standard pneumatic freespool
- Control valve :** The direction control valves to be used must be A, B, and T. The A and B lines must be open to the T (Tank) line.

Application Areas



Heavy-Duty
Tow Trucks



Low-Bed
Semi-Trailers



Towing and
Recovery Vehicles



Trailers



Offroad Trucks



Each new winch is guaranteed against defects in workmanship and material defects for a period of 24 months from date of purchase. Wire ropes are not included under warranty.

Description

Towing and recovery winch for commercial and service vehicles. This model has a rigid planetary gear, disc brake system and ductile iron body ready for challenging tasks. Different configurations are available upon request. Fully compliant with **EN 14492**. Additional equipment and accessories are available as well.



Specifications

Maximum Pulling Capacity	: 35000 kg / 66138 lbs
Maximum Rope Length	: 61 m / 200.1 ft
Recommended Wire Rope	: Ø26 mm / Ø1 1/32"
Hydraulic Motor (High Torque)	: 130 cc x2 / 7.93 in ³ x2
Maximum Pump Flow Rate	: 75 l/min / 19.81 gal/min
Max Working Pressure	: 200 bar / 2900 psi
Weight	: 465 kg / 1025 lbs

Additional Equipment

Standard package:

- Rope
- Roller fairlead
- Pressure roller
- Pneumatic freespool
- Hydraulic inlet G 1/2"

Optional:

- Radio control system
- ECU & IQAN equipment
- M20 mounting bolts
- Hydraulic control valve with manual lever

Line Pull and Line Speed Performance

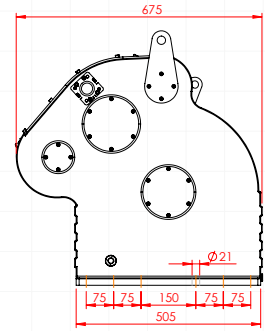
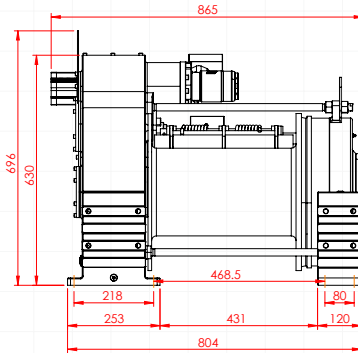
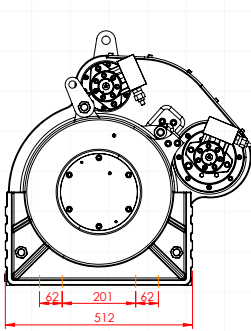
Winding layer	Pulling capacity (kg / lbs)	Rope speed (m/min - ft/min)	Rope length (m/ft)
1	35000 / 77162	3.37 / 11.05	11.7 / 38.5
2	29063 / 64074	4.06 / 13.31	26.0 / 85.0
3	24849 / 54782	4.74 / 15.57	42.5 / 139.3
4	21701 / 47844	5.43 / 17.82	61.4 / 201.4



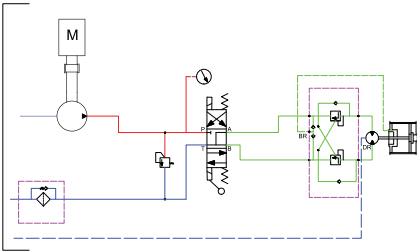
These winches should not be used for lifting and there should be at least 5 wraps of wire rope on the drum. The data shown are for maximum pressure and maximum flow and should be used as a reference only.

PULLFORCE reserves the right to change the specified data without prior notice.

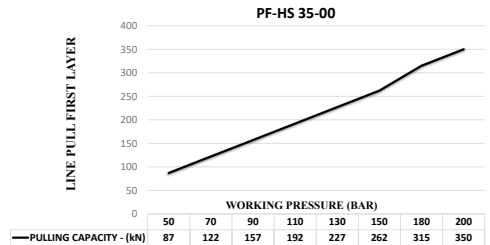
Dimensions



Hydraulic Circuit



Hydraulic Performance



Features

- Gear reduction : 71.88:1
- Gear type : Single stage planetary with specially designed gear system
- Winch construction : Ductile iron body reinforced with heat-treatment
- Braking : Negative hydraulic disc brake system
- Drum rotation : Clockwise, or counter clockwise rotation as required
- Roller guides : Commercial type with large diameter rollers and grease ways
- Free spooling : Standard pneumatic freespool
- Control valve : The direction control valves to be used must be A, B, and T. The A and B lines must be open to the T (Tank) line.

Application Areas



Heavy-Duty
Tow Trucks



Low-Bed
Semi-Trailers



Towing and
Recovery Vehicles



Trailers



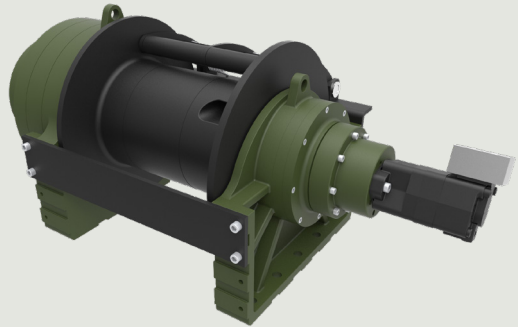
Offroad Trucks



Each new winch is guaranteed against defects in workmanship and material defects for a period of 24 months from date of purchase. Wire ropes are not included under warranty.

Description

Towing and recovery winch for commercial and service vehicles. This model has a rigid planetary gear, disc brake system and ductile iron body ready for challenging tasks. Different configurations are available upon request. Fully compliant with **EN 14492**. Additional equipment and accessories are available as well.



Specifications

Maximum Pulling Capacity	: 35000 kg / 66138 lbs
Maximum Rope Length	: 65 m / 213 ft
Recommended Wire Rope	: Ø26 mm / Ø1 1/32"
Hydraulic Motor (High Torque)	: 200 cc / 12.2 in ³
Maximum Pump Flow Rate	: 75 l/min / 19.81 gal/min
Max Working Pressure	: 200 bar / 2900 psi
Weight	: 540 kg / 1190 lbs

Additional Equipment

Standard package:

- Rope
- Roller fairlead
- Pressure roller
- Pneumatic freespool
- Hydraulic inlet G 1/2"

Optional:

- Radio control system
- ECU & IQAN equipment
- M20 mounting bolts
- Hydraulic control valve with manual lever

Line Pull and Line Speed Performance

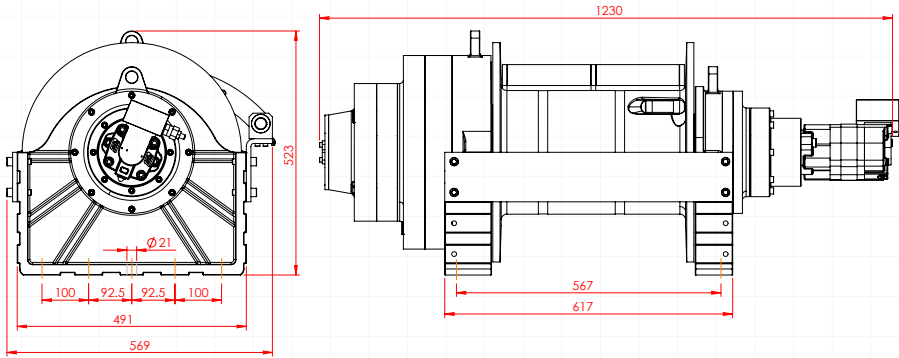
Winding layer	Pulling capacity (kg / lbs)	Rope speed (m/min - ft/min)	Rope length (m/ft)
1	35000 / 77162	3.3 / 10.8	12.8 / 42.2
2	29491 / 65017	3.9 / 12.8	28.1 / 92.2
3	25481 / 56175	4.5 / 14.9	45.7 / 150.1
4	22430 / 49451	5.1 / 16.9	65.8 / 215.9



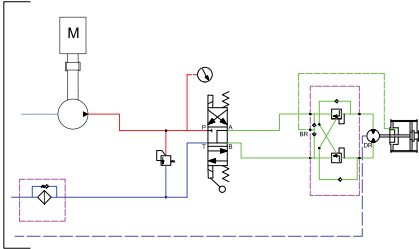
These winches should not be used for lifting and there should be at least 5 wraps of wire rope on the drum. The data shown are for maximum pressure and maximum flow and should be used as a reference only.

PULLFORCE reserves the right to change the specified data without prior notice.

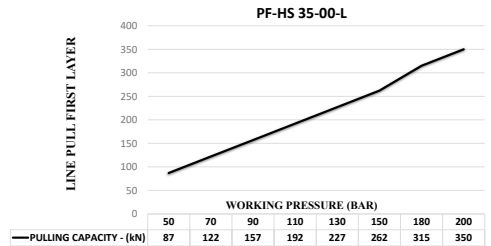
Dimensions



Hydraulic Circuit



Hydraulic Performance



Features

- Gear reduction : 104.33:1
- Gear type : Three stage planetary
- Winch construction : Ductile iron body reinforced with heat-treatment
- Braking : Negative hydraulic disc brake system
- Drum rotation : Clockwise, or counter clockwise rotation as required
- Roller guides : Commercial type with large diameter rollers and grease ways
- Free spooling : Standard pneumatic freespool
- Control valve : The direction control valves to be used must be A, B, and T. The A and B lines must be open to the T (Tank) line.

Application Areas



Heavy-Duty
Tow Trucks



Low-Bed
Semi-Trailers



Towing and
Recovery Vehicles



Trailers



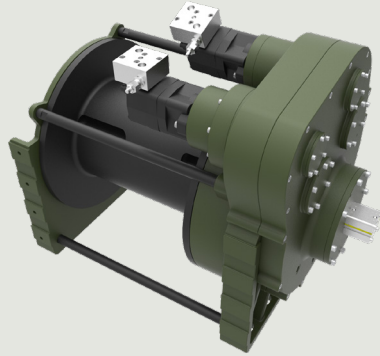
Offroad Trucks



Each new winch is guaranteed against defects in workmanship and material defects for a period of 24 months from date of purchase. Wire ropes are not included under warranty.

Description

Towing and recovery winch for commercial and service vehicles. This model has a rigid planetary gear, disc brake system and ductile iron body ready for challenging tasks. Different configurations are available upon request. Fully compliant with **EN 14492**. Additional equipment and accessories are available as well.



Specifications

Maximum Pulling Capacity	: 40000 kg / 88148 lbs
Maximum Rope Length	: 85 m / 278.8 ft
Recommended Wire Rope	: Ø28 mm / Ø10/9"
Hydraulic Motor (High Torque)	: 130 cc x 2 / 12.2 in ³ x 2
Maximum Pump Flow Rate	: 75 l/min / 19.81 gal/min
Max Working Pressure	: 200 bar / 2900 psi
Weight	: 725 kg / 1598 lbs

Additional Equipment

Standard package:

- Rope
- Roller fairlead
- Pressure roller
- Pneumatic freespool
- Hydraulic inlet G 1/2"

Optional:

- Radio control system
- ECU & IQAN equipment
- Double speed working mode
- Automatic roller fairlead
- M24 mounting bolts
- Hydraulic control valve with manual lever

Line Pull and Line Speed Performance

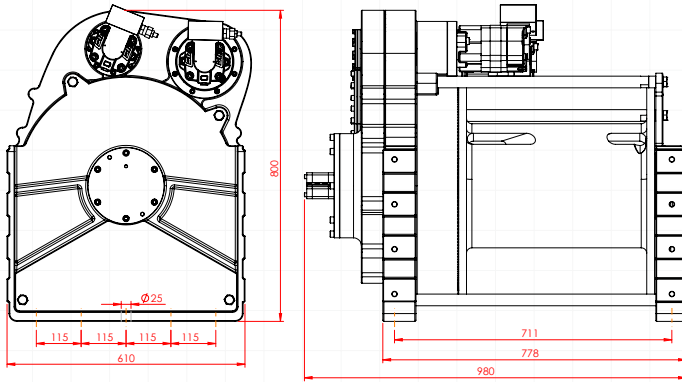
Winding layer	Pulling capacity (kg / lbs)	Rope speed (m/min - ft/min)	Rope length (m/ft)
1	40000 / 88185	2.86 / 9.39	17.4 / 57.2
2	34210 / 75420	3.34 / 10.97	37.8 / 124.2
3	29884 / 65883	3.83 / 12.56	61.2 / 200.8
4	26529 / 58487	4.31 / 14.15	87.5 / 287.2



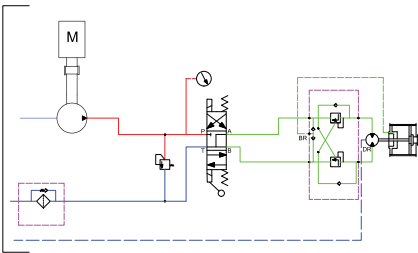
These winches should not be used for lifting and there should be at least 5 wraps of wire rope on the drum. The data shown are for maximum pressure and maximum flow and should be used as a reference only.

PULLFORCE reserves the right to change the specified data without prior notice.

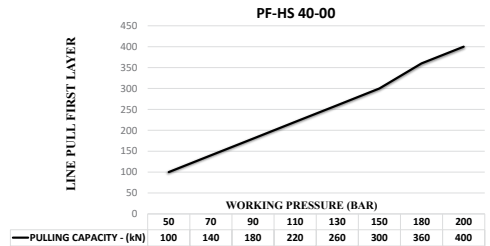
Dimensions



Hydraulic Circuit



Hydraulic Performance



Features

- Gear reduction :** 110:1
- Gear type :** Single stage planetary with specially designed gear system
- Winch construction :** Ductile iron body reinforced with heat-treatment
- Braking :** Negative hydraulic disc brake system
- Drum rotation :** Clockwise, or counter clockwise rotation as required
- Roller guides :** Commercial type with large diameter rollers and grease ways
- Free spooling :** Standard pneumatic freespool
- Control valve :** The direction control valves to be used must be A, B, and T. The A and B lines must be open to the T (Tank) line.

Application Areas



Heavy-Duty
Tow Trucks



Low-Bed
Semi-Trailers



Towing and
Recovery Vehicles



Trailers



Offroad Trucks



Each new winch is guaranteed against defects in workmanship and material defects for a period of 24 months from date of purchase. Wire ropes are not included under warranty.

Description

Towing and recovery winch for commercial and service vehicles. This model has a rigid planetary gear, disc brake system and ductile iron body ready for challenging tasks. Different configurations are available upon request. Fully compliant with **EN 14492**. Additional equipment and accessories are available as well.



Specifications

Maximum Pulling Capacity	: 40000 kg / 88148 lbs
Maximum Rope Length	: 62 m / 203 ft
Recommended Wire Rope	: Ø28 mm / Ø10/9"
Hydraulic Motor (High Torque)	: 315 cc / 19.2 in ³
Maximum Pump Flow Rate	: 75 l/min / 19.81 gal/min
Max Working Pressure	: 200 bar / 2900 psi
Weight	: 540 kg / 1190 lbs

Additional Equipment

Standard package:

- Rope
- Roller fairlead
- Pressure roller
- Pneumatic freespool
- Hydraulic inlet G 1/2"

Optional:

- Radio control system
- ECU & IQAN equipment
- Double speed working mode
- Automatic roller fairlead
- M20 mounting bolts
- Hydraulic control valve with manual lever

Line Pull and Line Speed Performance

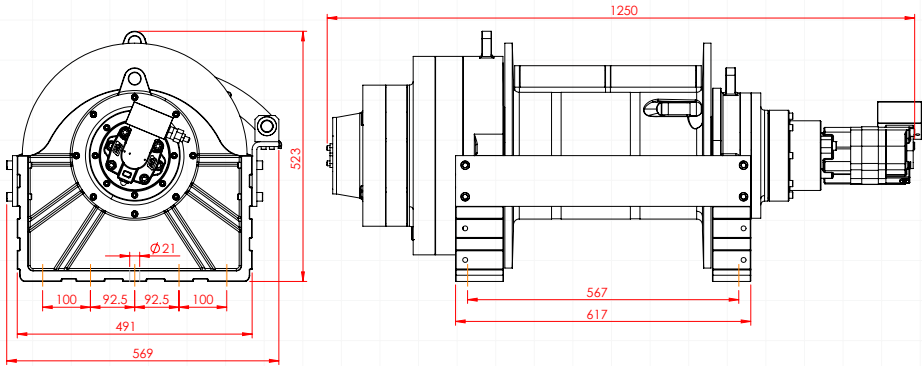
Winding layer	Pulling capacity (kg / lbs)	Rope speed (m/min - ft/min)	Rope length (m/ft)
1	40000 / 88185	2.1 / 6.9	12 / 39.4
2	33341 / 73504	2.5 / 8.3	26.4 / 86.7
3	28583 / 63014	2.9 / 9.7	43.2 / 141.9
4	25013 / 55144	3.4 / 11.1	62.5 / 204.9



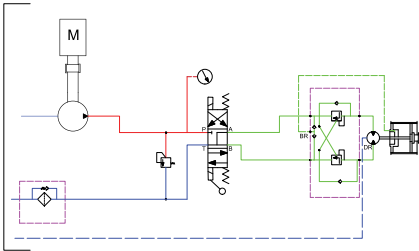
These winches should not be used for lifting and there should be at least 5 wraps of wire rope on the drum. The data shown are for maximum pressure and maximum flow and should be used as a reference only.

PULLFORCE reserves the right to change the specified data without prior notice.

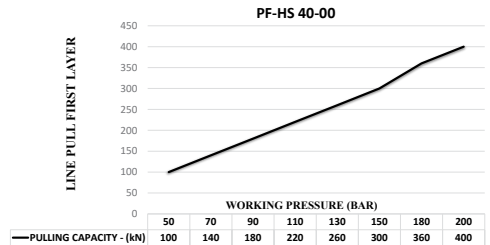
Dimensions



Hydraulic Circuit



Hydraulic Performance



Features

- Gear reduction :** 104.33:1
- Gear type :** Three stage planetary
- Winch construction :** Ductile iron body reinforced with heat-treatment
- Braking :** Negative hydraulic disc brake system
- Drum rotation :** Clockwise, or counter clockwise rotation as required
- Roller guides :** Commercial type with large diameter rollers and grease ways
- Free spooling :** Standard pneumatic freespool
- Control valve :** The direction control valves to be used must be A, B, and T. The A and B lines must be open to the T (Tank) line.

Application Areas



Heavy-Duty
Tow Trucks



Low-Bed
Semi-Trailers



Towing and
Recovery Vehicles



Trailers



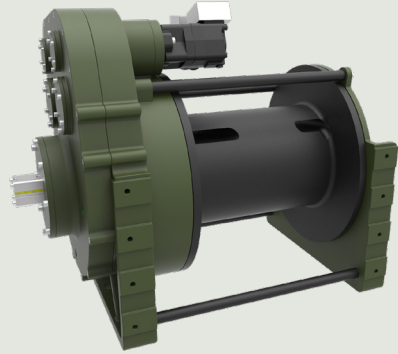
Offroad Trucks



Each new winch is guaranteed against defects in workmanship and material defects for a period of 24 months from date of purchase. Wire ropes are not included under warranty.

Description

Towing and recovery winch for commercial and service vehicles. This model has a rigid planetary gear, disc brake system and ductile iron body ready for challenging tasks. Different configurations are available upon request. Fully compliant with **EN 14492**. Additional equipment and accessories are available as well.



Specifications

Maximum Pulling Capacity	: 45000 kg / 99208 lbs
Maximum Rope Length	: 83 m / 182 ft
Recommended Wire Rope	: Ø30 mm / Ø1 3/16"
Hydraulic Motor (High Torque)	: 200 cc x2 / 12.2 in ³ x2
Maximum Pump Flow Rate	: 75 l/min / 19.81 gal/min
Max Working Pressure	: 200 bar / 2900 psi
Weight	: 725 kg / 1598 lbs

Additional Equipment

Standard package:

- Rope
- Roller fairlead
- Pressure roller
- Pneumatic freespool
- Hydraulic inlet G 1/2"

Optional:

- Radio control system
- ECU & IQAN equipment
- M24 mounting bolts
- Hydraulic control valve with manual lever

Line Pull and Line Speed Performance

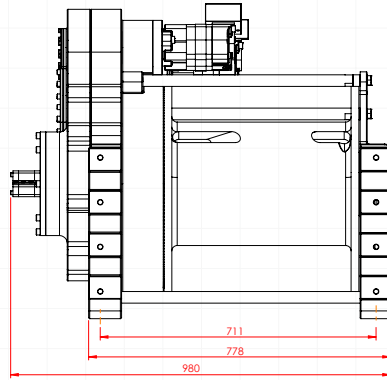
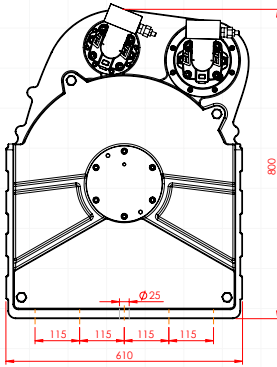
Winding layer	Pulling capacity (kg / lbs)	Rope speed (m/min - ft/min)	Rope length (m/ft)
1	45000 / 99208	1.9 / 6.1	16.5 / 54
2	38127 / 84056	2.2 / 7.2	35.9 / 117.7
3	33076 / 72919	2.5 / 8.3	58.3 / 191.2
4	29206 / 64388	2.9 / 9.5	83.6 / 274.4



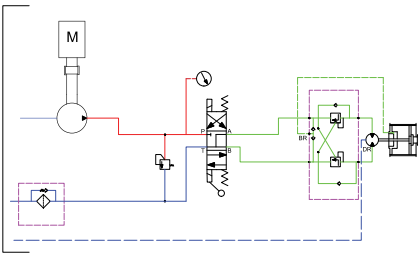
These winches should not be used for lifting and there should be at least 5 wraps of wire rope on the drum. The data shown are for maximum pressure and maximum flow and should be used as a reference only.

PULLFORCE reserves the right to change the specified data without prior notice.

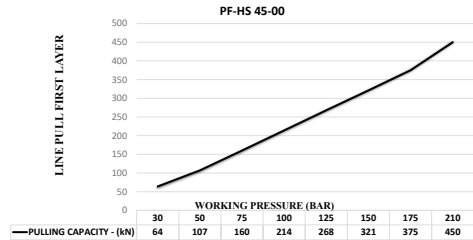
Dimensions



Hydraulic Circuit



Hydraulic Performance



Features

- Gear reduction : 110:1
- Gear type : Single stage planetary with specially designed gear system
- Winch construction : Ductile iron body reinforced with heat-treatment
- Braking : Negative hydraulic disc brake system
- Drum rotation : Clockwise, or counter clockwise rotation as required
- Roller guides : Commercial type with large diameter rollers and grease ways
- Free spooling : Standard pneumatic freespool
- Control valve : The direction control valves to be used must be A, B, and T. The A and B lines must be open to the T (Tank) line.

Application Areas



Heavy-Duty
Tow Trucks



Low-Bed
Semi-Trailers



Towing and
Recovery Vehicles



Trailers



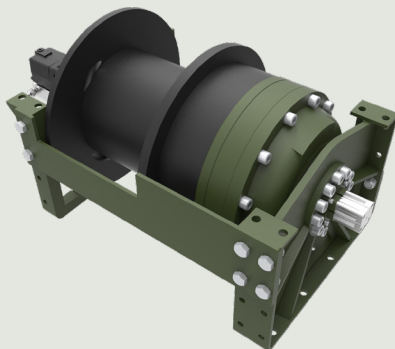
Offroad Trucks



Each new winch is guaranteed against defects in workmanship and material defects for a period of 24 months from date of purchase. Wire ropes are not included under warranty.

Description

Towing and recovery winch for commercial and service vehicles. This model has a rigid planetary gear, disc brake system and steel cast body ready for challenging tasks. Different configurations are available upon request. Fully compliant with **EN 14492**. Additional equipment and accessories are available as well.



Specifications

Maximum Pulling Capacity : 45000 kg / 99208 lbs

Maximum Rope Length : 58 m / 190 ft

Recommended Wire Rope : Ø30 mm / Ø1 3/16"

Hydraulic Motor (High Torque) : 200 cc / 12.2 in³

Maximum Pump Flow Rate : 75 l/min / 19.81 gal/min

Max Working Pressure : 200 bar / 2900 psi

Weight : 598 kg / 1318 lbs

Additional Equipment

Standard package:

- Rope
- Roller fairlead
- Pressure roller
- Pneumatic freespool
- Hydraulic inlet G 1/2"

Optional:

- Radio control system
- ECU & IQAN equipment
- M20 mounting bolts
- Hydraulic control valve with manual lever

Line Pull and Line Speed Performance

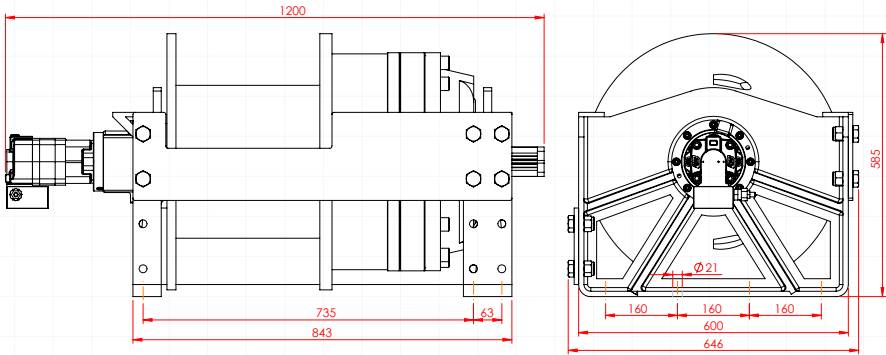
Winding layer	Pulling capacity (kg / lbs)	Rope speed (m/min - ft/min)	Rope length (m/ft)
1	45000 / 99208	2.6 / 8.6	11.7 / 38.3
2	38475 / 84823	3.1 / 10.1	25.3 / 83
3	33603 / 74082	3.5 / 11.5	40.9 / 134.3
4	29826 / 65755	4 / 13	58.5 / 192



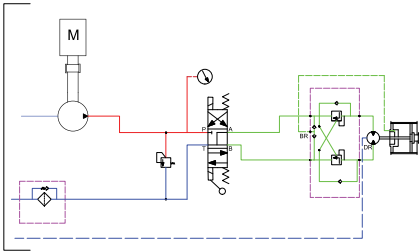
These winches should not be used for lifting and there should be at least 5 wraps of wire rope on the drum. The data shown are for maximum pressure and maximum flow and should be used as a reference only.

PULLFORCE reserves the right to change the specified data without prior notice.

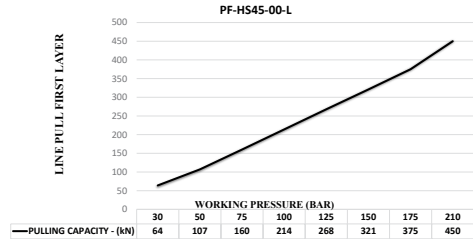
Dimensions



Hydraulic Circuit



Hydraulic Performance



Features

- Gear reduction : 166.46:1
- Gear type : Three stage planetary
- Winch construction : Steel cast body reinforced with heat-treatment
- Braking : Negative hydraulic disc brake system
- Drum rotation : Clockwise, or counter clockwise rotation as required
- Roller guides : Commercial type with large diameter rollers and grease ways
- Free spooling : Standard pneumatic freespool
- Control valve : The direction control valves to be used must be A, B, and T. The A and B lines must be open to the T (Tank) line.

Application Areas



Heavy-Duty
Tow Trucks



Low-Bed
Semi-Trailers



Towing and
Recovery Vehicles



Trailers



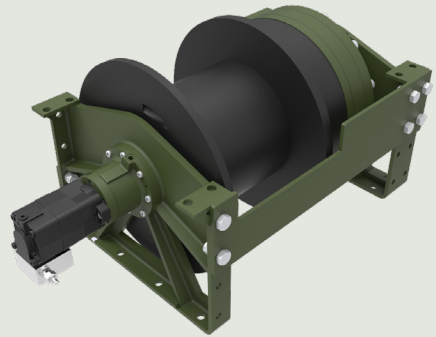
Offroad Trucks



Each new winch is guaranteed against defects in workmanship and material defects for a period of 24 months from date of purchase. Wire ropes are not included under warranty.

Description

Towing and recovery winch for commercial and service vehicles. This model has a rigid planetary gear, disc brake system and steel cast body ready for challenging tasks. Different configurations are available upon request. Fully compliant with **EN 14492**. Additional equipment and accessories are available as well.



Specifications

Maximum Pulling Capacity	: 50000 kg / 110231 lbs
Maximum Rope Length	: 58 m / 190 ft
Recommended Wire Rope	: Ø30 mm / Ø1 3/16"
Hydraulic Motor (High Torque)	: 315 cc / 19.2 in ³
Maximum Pump Flow Rate	: 75 l/min / 19.81 gal/min
Max Working Pressure	: 200 bar / 2900 psi
Weight	: 598 kg / 1318 lbs

Additional Equipment

Standard package:

- Rope
- Roller fairlead
- Pressure roller
- Pneumatic freespool
- Hydraulic inlet G 1/2"

Optional:

- Radio control system
- ECU & IQAN equipment
- M20 mounting bolts
- Hydraulic control valve with manual lever

Line Pull and Line Speed Performance

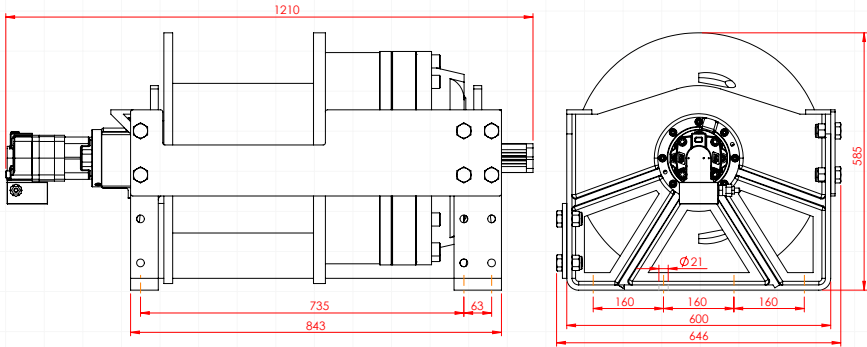
Winding layer	Pulling capacity (kg / lbs)	Rope speed (m/min - ft/min)	Rope length (m/ft)
1	50000 / 110231	2.6 / 8.6	11.7 / 38.3
2	42750 / 94248	3.1 / 10.1	25.3 / 83
3	37337 / 82313	3.5 / 11.5	40.9 / 134.3
4	33140 / 73061	4 / 13	58.5 / 192



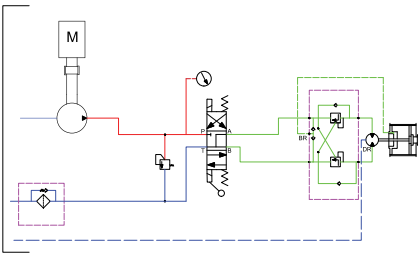
These winches should not be used for lifting and there should be at least 5 wraps of wire rope on the drum. The data shown are for maximum pressure and maximum flow and should be used as a reference only.

PULLFORCE reserves the right to change the specified data without prior notice.

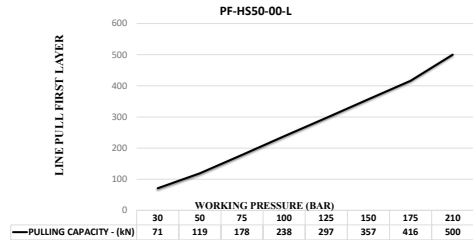
Dimensions



Hydraulic Circuit



Hydraulic Performance



Features

- Gear reduction : 166.46:1
- Gear type : Three stage planetary
- Winch construction : Steel cast body reinforced with heat-treatment
- Braking : Negative hydraulic disc brake system
- Drum rotation : Clockwise, or counter clockwise rotation as required
- Roller guides : Commercial type with large diameter rollers and grease ways
- Free spooling : Standard pneumatic freespool
- Control valve : The direction control valves to be used must be A, B, and T. The A and B lines must be open to the T (Tank) line.

Application Areas



Heavy-Duty
Tow Trucks



Low-Bed
Semi-Trailers



Towing and
Recovery Vehicles



Trailers



Offroad Trucks



Each new winch is guaranteed against defects in workmanship and material defects for a period of 24 months from date of purchase. Wire ropes are not included under warranty.

SPECIAL SERIES WINCHES



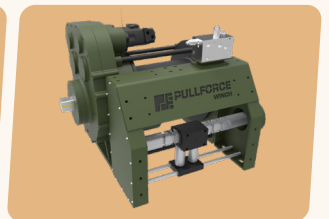
PF-SS 30-00



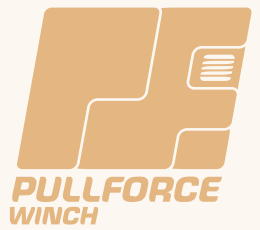
PF-SS 35-00



PF-SS 40-00



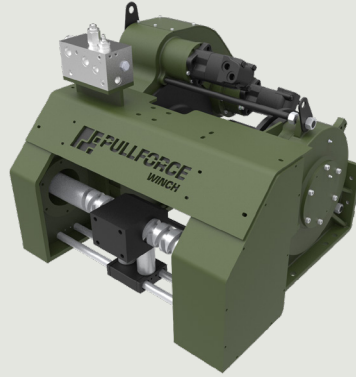
PF-SS 45-00





Description

Double speed towing and recovery winch for commercial and service vehicles. This model has a rigid planetary gear, disc brake system, automatic roller fairlead and ductile iron body ready for challenging tasks. Different configurations are available upon request. Fully compliant with **EN 14492**. Additional equipment and accessories are available as well.



Specifications

Maximum Pulling Capacity	: 30000 kg / 66138 lbs
Maximum Rope Length	: 64 m / 209.9 ft
Recommended Wire Rope	: Ø24 mm / Ø15/16"
Hydraulic Motor	: 160 cc x 2 / 9.76 in ³ x 2
Maximum Pump Flow Rate	: 60 l/min / 15.85 gal/min
Max Working Pressure	: 200 bar / 2900 psi
Weight	: 515 kg / 1135 lbs

Additional Equipment

Standard package:

- Rope
- Pressure roller
- Pneumatic freespool
- Double speed working mode
- Automatic roller fairlead
- Hydraulic inlet G 1/2"

Optional:

- Radio control system
- ECU & IQAN equipment
- M20 mounting bolts
- Hydraulic control valve with manual lever

Line Pull and Line Speed Performance

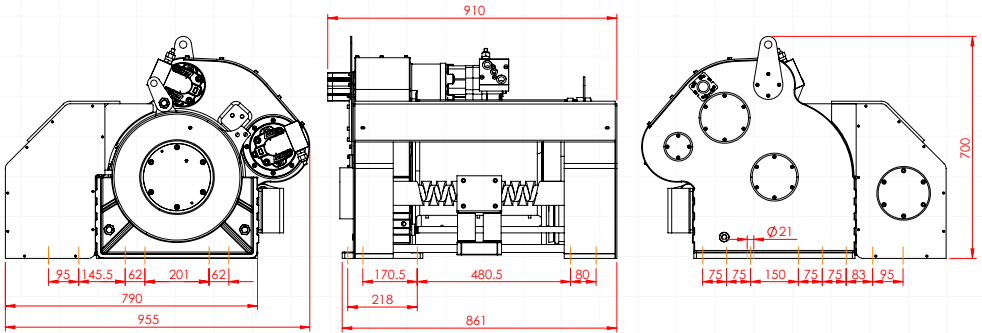
Winding layer	Pulling capacity (kg / lbs)	Rope speed (m/min - ft/min)	Rope length (m/ft)
1	30000 / 66139	2.7 / 8.9	12.5 / 41
2	25209 / 55577	3.2 / 10.6	27.4 / 89.7
3	21738 / 47923	3.7 / 12.3	44.6 / 146.3
4	19107 / 42123	4.3 / 14	64 / 210.6



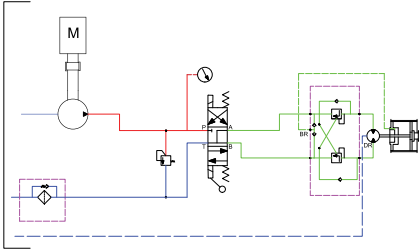
These winches should not be used for lifting and there should be at least 5 wraps of wire rope on the drum. The data shown are for maximum pressure and maximum flow and should be used as a reference only.

PULLFORCE reserves the right to change the specified data without prior notice.

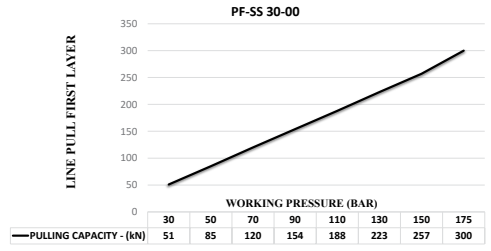
Dimensions



Hydraulic Circuit



Hydraulic Performance



Features

- Gear reduction :** 71.88:1
- Gear type :** Single stage planetary with specially designed gear system
- Winch construction :** Ductile iron body reinforced with heat-treatment
- Braking :** Negative hydraulic disc brake system
- Drum rotation :** Clockwise, or counter clockwise rotation as required
- Roller guides :** Commercial type with large diameter rollers and grease ways
- Free spooling :** Standard pneumatic freespool
- Control valve :** The direction control valves to be used must be A, B, and T. The A and B lines must be open to the T (Tank) line.

Application Areas



Heavy-Duty
Tow Trucks



Low-Bed
Semi-Trailers



Towing and
Recovery Vehicles



Trailers



Offroad Trucks

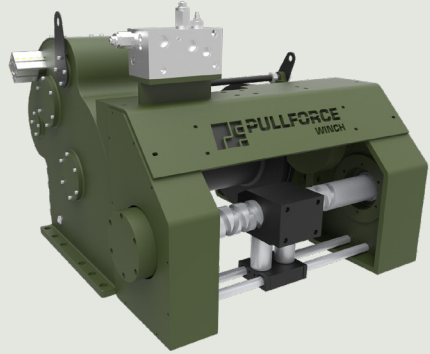


Each new winch is guaranteed against defects in workmanship and material defects for a period of 24 months from date of purchase. Wire ropes are not included under warranty.



Description

Double speed towing and recovery winch for commercial and service vehicles. This model has a rigid planetary gear, disc brake system, automatic roller fairlead and ductile iron body ready for challenging tasks. Different configurations are available upon request. Fully compliant with **EN 14492**. Additional equipment and accessories are available as well.



Specifications

Maximum Pulling Capacity	: 35000 kg / 66138 lbs
Maximum Rope Length	: 61 m / 200.1 ft
Recommended Wire Rope	: Ø26 mm / Ø1 1/32"
Hydraulic Motor (High Torque)	: 130 cc x 2 / 7.93 in ³ x 2
Maximum Pump Flow Rate	: 75 l/min / 19.81 gal/min
Max Working Pressure	: 200 bar / 2900 psi
Weight	: 515 kg / 1135 lbs

Additional Equipment

Standard package:

- Rope
- Pressure roller
- Pneumatic freespool
- Double speed working mode
- Automatic roller fairlead
- Hydraulic inlet G 1/2"

Optional:

- Radio control system
- ECU & IQAN equipment
- M20 mounting bolts
- Hydraulic control valve with manual lever

Line Pull and Line Speed Performance

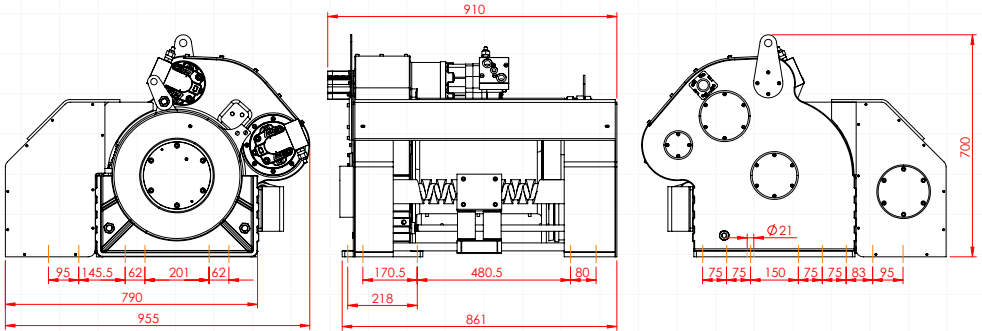
Winding layer	Pulling capacity (kg / lbs)	Rope speed (m/min - ft/min)	Rope length (m/ft)
1	35000 / 77162	3.37 / 11.05	11.7 / 38.5
2	29063 / 64074	4.06 / 13.31	26.0 / 85.0
3	24849 / 54782	4.74 / 15.57	42.5 / 139.3
4	21701 / 47844	5.43 / 17.82	61.4 / 201.4



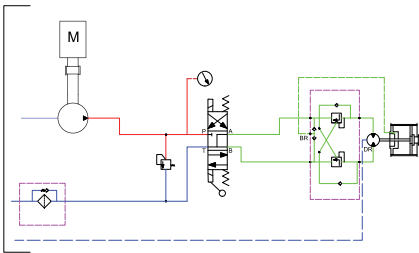
These winches should not be used for lifting and there should be at least 5 wraps of wire rope on the drum. The data shown are for maximum pressure and maximum flow and should be used as a reference only.

PULLFORCE reserves the right to change the specified data without prior notice.

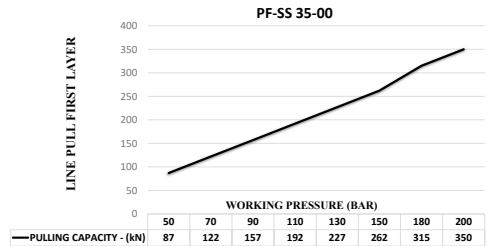
Dimensions



Hydraulic Circuit



Hydraulic Performance



Features

- Gear reduction :** 71.88:1
- Gear type :** Single stage planetary with specially designed gear system
- Winch construction :** Ductile iron body reinforced with heat-treatment
- Braking :** Negative hydraulic disc brake system
- Drum rotation :** Clockwise, or counter clockwise rotation as required
- Roller guides :** Commercial type with large diameter rollers and grease ways
- Free spooling :** Standard pneumatic freespool
- Control valve :** The direction control valves to be used must be A, B, and T. The A and B lines must be open to the T (Tank) line.

Application Areas



Heavy-Duty
Tow Trucks



Low-Bed
Semi-Trailers



Towing and
Recovery Vehicles



Trailers



Offroad Trucks

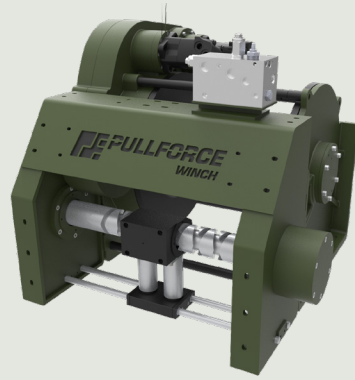


Each new winch is guaranteed against defects in workmanship and material defects for a period of 24 months from date of purchase. Wire ropes are not included under warranty.



Description

Double speed towing and recovery winch for commercial and service vehicles. This model has a rigid planetary gear, disc brake system, automatic roller fairlead and ductile iron body ready for challenging tasks. Different configurations are available upon request. Fully compliant with **EN 14492**. Additional equipment and accessories are available as well.



Specifications

Maximum Pulling Capacity	: 40000 kg / 88148 lbs
Maximum Rope Length	: 85 m / 278.8 ft
Recommended Wire Rope	: Ø28 mm / Ø10/9"
Hydraulic Motor (High Torque)	: 130 cc x 2 / 7.93 in ³ x 2
Maximum Pump Flow Rate	: 75 l/min / 19.81 gal/min
Max Working Pressure	: 200 bar / 2900 psi
Weight	: 775 kg / 1708 lbs

Additional Equipment

Standard package:

- Rope
- Pressure roller
- Pneumatic freespool
- Double speed working mode
- Automatic roller fairlead
- Hydraulic inlet G 1/2"

Optional:

- Radio control system
- ECU & IQAN equipment
- M20 mounting bolts
- Hydraulic control valve with manual lever

Line Pull and Line Speed Performance

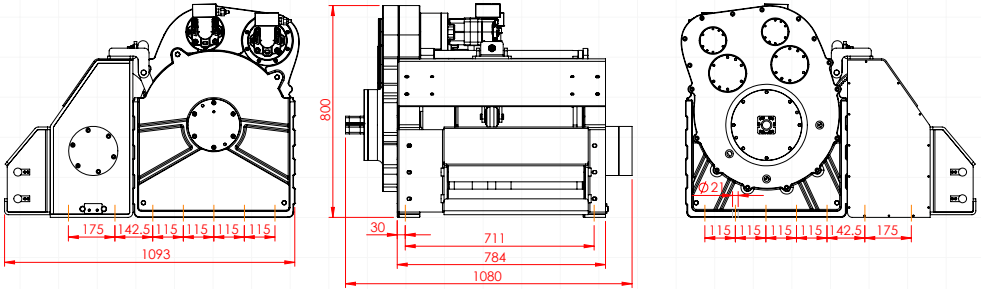
Winding layer	Pulling capacity (kg / lbs)	Rope speed (m/min - ft/min)	Rope length (m/ft)
1	40000 / 88185	2.86 / 9.39	17.4 / 57.2
2	34210 / 75420	3.34 / 10.97	37.8 / 124.2
3	29884 / 65883	3.83 / 12.56	61.2 / 200.8
4	26529 / 58487	4.31 / 14.15	87.5 / 287.2



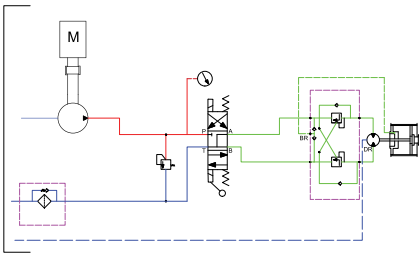
These winches should not be used for lifting and there should be at least 5 wraps of wire rope on the drum. The data shown are for maximum pressure and maximum flow and should be used as a reference only.

PULLFORCE reserves the right to change the specified data without prior notice.

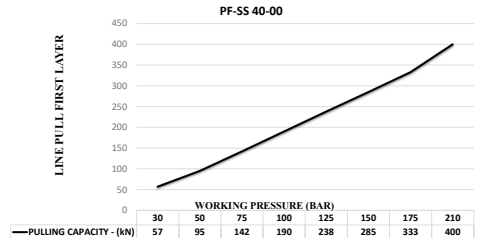
Dimensions



Hydraulic Circuit



Hydraulic Performance



Features

- Gear reduction : 110:1
- Gear type : Single stage planetary with specially designed gear system
- Winch construction : Ductile iron body reinforced with heat-treatment
- Braking : Negative hydraulic disc brake system
- Drum rotation : Clockwise, or counter clockwise rotation as required
- Roller guides : Commercial type with large diameter rollers and grease ways
- Free spooling : Standard pneumatic freespool
- Control valve : The direction control valves to be used must be A, B, and T. The A and B lines must be open to the T (Tank) line.

Application Areas



Heavy-Duty
Tow Trucks



Low-Bed
Semi-Trailers



Towing and
Recovery Vehicles



Trailers



Offroad Trucks

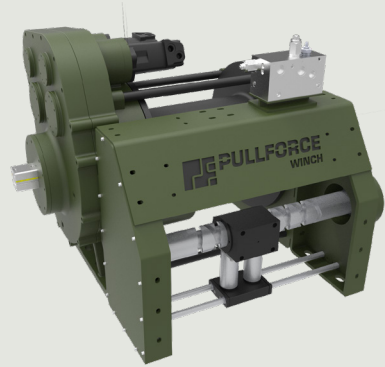


Each new winch is guaranteed against defects in workmanship and material defects for a period of 24 months from date of purchase. Wire ropes are not included under warranty.



Description

Double speed towing and recovery winch for commercial and service vehicles. This model has a rigid planetary gear, disc brake system, automatic roller fairlead and ductile iron body ready for challenging tasks. Different configurations are available upon request. Fully compliant with **EN 14492**. Additional equipment and accessories are available as well.



Specifications

Maximum Pulling Capacity	: 45000 kg / 99208 lbs
Maximum Rope Length	: 83 m / 182 ft
Recommended Wire Rope	: Ø30 mm / Ø1 3/16"
Hydraulic Motor (High Torque)	: 200 cc x 2 / 12.2 in ³ x 2
Maximum Pump Flow Rate	: 75 l/min / 19.81 gal/min
Max Working Pressure	: 200 bar / 2900 psi
Weight	: 775 kg / 1708 lbs

Additional Equipment

Standard package:

- Rope
- Pressure roller
- Pneumatic freespool
- Double speed working mode
- Automatic roller fairlead
- Hydraulic inlet G 1/2"

Optional:

- Radio control system
- ECU & IQAN equipment
- M20 mounting bolts
- Hydraulic control valve with manual lever

Line Pull and Line Speed Performance

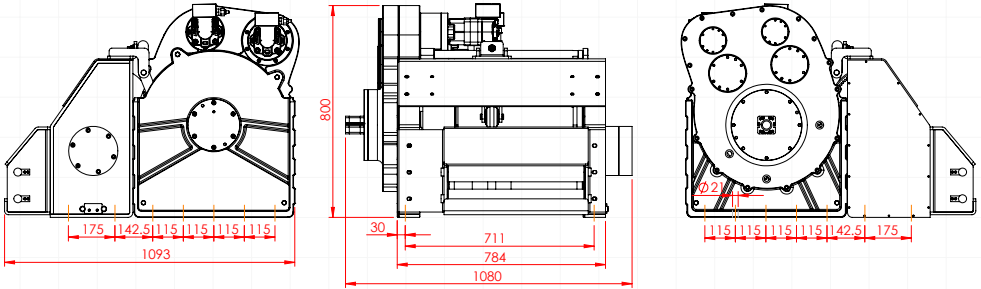
Winding layer	Pulling capacity (kg / lbs)	Rope speed (m/min - ft/min)	Rope length (m/ft)
1	45000 / 99208	1.9 / 6.1	16.5 / 54
2	38127 / 84056	2.2 / 7.2	35.9 / 117.7
3	33076 / 72919	2.5 / 8.3	58.3 / 191.2
4	29206 / 64388	2.9 / 9.5	83.6 / 274.4



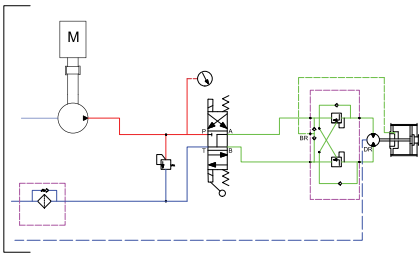
These winches should not be used for lifting and there should be at least 5 wraps of wire rope on the drum. The data shown are for maximum pressure and maximum flow and should be used as a reference only.

PULLFORCE reserves the right to change the specified data without prior notice.

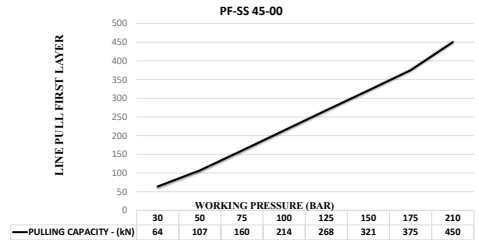
Dimensions



Hydraulic Circuit



Hydraulic Performance



Features

- Gear reduction :** 110:1
- Gear type :** Single stage planetary with specially designed gear system
- Winch construction :** Ductile iron body reinforced with heat-treatment
- Braking :** Negative hydraulic disc brake system
- Drum rotation :** Clockwise, or counter clockwise rotation as required
- Roller guides :** Commercial type with large diameter rollers and grease ways
- Free spooling :** Standard pneumatic freespool
- Control valve :** The direction control valves to be used must be A, B, and T. The A and B lines must be open to the T (Tank) line.

Application Areas



Heavy-Duty
Tow Trucks



Low-Bed
Semi-Trailers



Towing and
Recovery Vehicles



Trailers



Offroad Trucks



Each new winch is guaranteed against defects in workmanship and material defects for a period of 24 months from date of purchase. Wire ropes are not included under warranty.

MILITARY SERIES WINCHES



PF-MLS 30-00-D



PF-MLS 35-00-D



Description

Recovery winch for military vehicles. Doubled performance allows to tow heavy military vehicles to a low-bed type trailer for maintenance, transportation and recovery purposes. Different configurations are available upon request. Fully compliant with **EN 14492**. Additional equipment and accessories are available as well.



Specifications

Maximum Pulling Capacity	: 30000 kg x2/ 66138 lbs x2
Maximum Rope Length	: 64 m / 209.9 ft
Recommended Wire Rope	: Ø24 mm / Ø15/16"
Hydraulic Motor	: 160 cc x2 / 9.76 in ³ x2
Maximum Pump Flow Rate	: 60 l/min x2 / 15.85 gal/min x2
Max Working Pressure	: 200 bar / 2900 psi
Weight	: 1200 kg / 2645 lbs

Additional Equipment

Standard package:

- Rope
- Roller fairlead
- Pressure roller
- Pneumatic freespool
- Hydraulic inlet G 1/2"

Optional:

- Radio control system
- ECU & IQAN equipment
- Double speed working mode
- Automatic roller fairlead
- M24 mounting bolts
- Hydraulic control valve with manual lever

Line Pull and Line Speed Performance

Winding layer	Pulling capacity (kg / lbs)	Rope speed (m/min - ft/min)	Rope length (m/ft)
1	(30000 / 66139) x2	2.7 / 8.9	12.5 / 41
2	(25209 / 55577) x2	3.2 / 10.6	27.4 / 89.7
3	(21738 / 47923) x2	3.7 / 12.3	44.6 / 146.3
4	(19107 / 42123) x2	4.3 / 14	64 / 210.6



These winches should not be used for lifting and there should be at least 5 wraps of wire rope on the drum. The data shown are for maximum pressure and maximum flow and should be used as a reference only.

PULLFORCE reserves the right to change the specified data without prior notice.

Description

Recovery winch for military vehicles. Doubled performance allows to tow heavy military vehicles to a low-bed type trailer for maintenance, transportation and recovery purposes. Different configurations are available upon request. Fully compliant with **EN 14492**. Additional equipment and accessories are available as well.



Specifications

Maximum Pulling Capacity	: 35000 kg x2 / 66138 lbs x2
Maximum Rope Length	: 61 m / 200.1 ft
Recommended Wire Rope	: Ø26 mm / Ø1 1/32"
Hydraulic Motor	: 130 cc x2 / 7.93 in ³ x2
Maximum Pump Flow Rate	: 75 l/min x2 / 19.81 gal/min x2
Max Working Pressure	: 200 bar / 2900 psi
Weight	: 1200 kg / 2645 lbs

Additional Equipment

Standard package:

- Rope
- Roller fairlead
- Pressure roller
- Pneumatic freespool
- Hydraulic inlet G 1/2"

Optional:

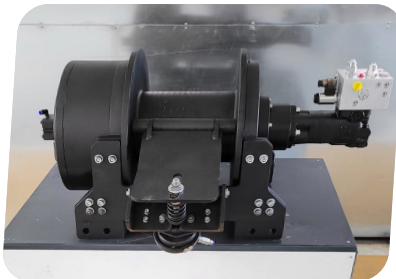
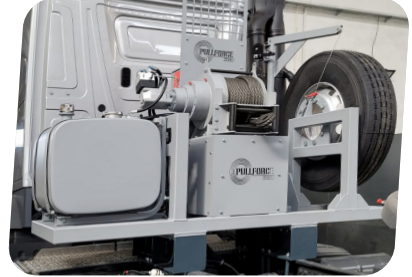
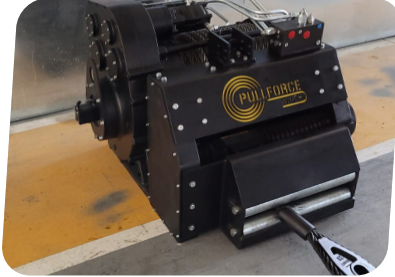
- Radio control system
- ECU & IQAN equipment
- Double speed working mode
- Automatic roller fairlead
- M24 mounting bolts
- Hydraulic control valve with manual lever

Line Pull and Line Speed Performance

Winding layer	Pulling capacity (kg / lbs)	Rope speed (m/min - ft/min)	Rope length (m/ft)
1	(35000 / 77162) x2	3.37 / 11.05	11.7 / 38.5
2	(29063 / 64074) x2	4.06 / 13.31	26.0 / 85.0
3	(24849 / 54782) x2	4.74 / 15.57	42.5 / 139.3
4	(21701 / 47844) x2	5.43 / 17.82	61.4 / 201.4



Each new winch is guaranteed against defects in workmanship and material defects for a period of 24 months from date of purchase. Wire ropes are not included under warranty.







PULLFORCE

YOUR EXPERT PARTNER IN WINCH EQUIPMENT





PULLFORCE
WINCH



Saray Mah. 688 Cad. No: 12
Kahramankazan / Ankara / Türkiye

T.+90 312 394 48 50
M.+90 538 543 51 48

export@pullforcewinch.com



Pullforce is a winch brand of Hidroforce