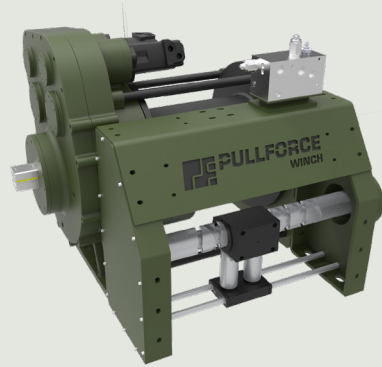




Description

Double speed towing and recovery winch for commercial and service vehicles. This model has a rigid planetary gear, disc brake system, automatic roller fairlead and ductile iron body ready for challenging tasks. Different configurations are available upon request. Fully compliant with **EN 14492**. Additional equipment and accessories are available as well.



Specifications

Maximum Pulling Capacity	: 45000 kg / 99208 lbs
Maximum Rope Length	: 83 m / 182 ft
Recommended Wire Rope	: Ø30 mm / Ø1 3/16"
Hydraulic Motor (High Torque)	: 200 cc x 2 / 12.2 in ³ x 2
Maximum Pump Flow Rate	: 75 l/min / 19.81 gal/min
Max Working Pressure	: 200 bar / 2900 psi
Weight	: 775 kg / 1708 lbs

Additional Equipment

Standard package:

- Rope
- Pressure roller
- Pneumatic freespool
- Double speed working mode
- Automatic roller fairlead
- Hydraulic inlet G 1/2"

Optional:

- Radio control system
- ECU & IQAN equipment
- M20 mounting bolts
- Hydraulic control valve with manual lever

Line Pull and Line Speed Performance

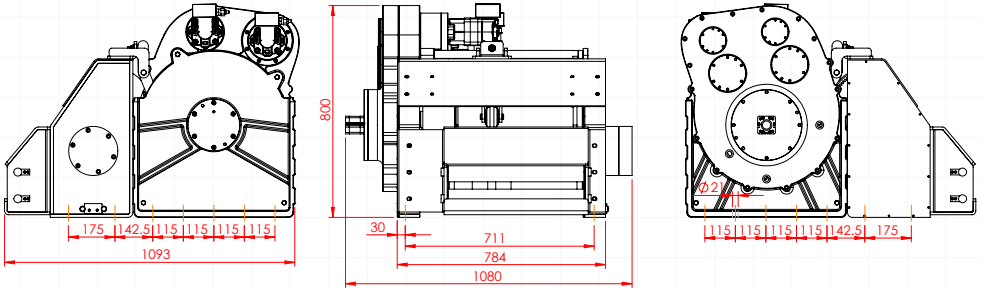
Winding layer	Pulling capacity (kg / lbs)	Rope speed (m/min - ft/min)	Rope length (m/ft)
1	45000 / 99208	1.9 / 6.1	16.5 / 54
2	38127 / 84056	2.2 / 7.2	35.9 / 117.7
3	33076 / 72919	2.5 / 8.3	58.3 / 191.2
4	29206 / 64388	2.9 / 9.5	83.6 / 274.4



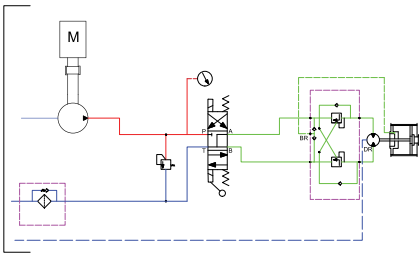
These winches should not be used for lifting and there should be at least 5 wraps of wire rope on the drum. The data shown are for maximum pressure and maximum flow and should be used as a reference only.

PULLFORCE reserves the right to change the specified data without prior notice.

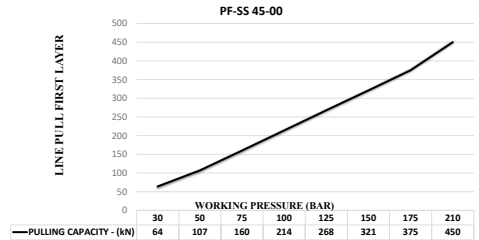
Dimensions



Hydraulic Circuit



Hydraulic Performance



Features

- Gear reduction :** 110:1
- Gear type :** Single stage planetary with specially designed gear system
- Winch construction :** Ductile iron body reinforced with heat-treatment
- Braking :** Negative hydraulic disc brake system
- Drum rotation :** Clockwise, or counter clockwise rotation as required
- Roller guides :** Commercial type with large diameter rollers and grease ways
- Free spooling :** Standard pneumatic freespool
- Control valve :** The direction control valves to be used must be A, B, and T. The A and B lines must be open to the T (Tank) line.

Application Areas



Heavy-Duty
Tow Trucks



Low-Bed
Semi-Trailers



Towing and
Recovery Vehicles



Trailers



Offroad Trucks



Each new winch is guaranteed against defects in workmanship and material defects for a period of 24 months from date of purchase. Wire ropes are not included under warranty.