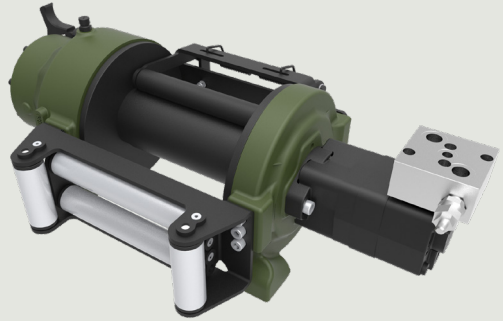




Description

Towing and recovery winch for cars and commercial vehicles. This effective and durable model has a planetary gear design, disc brake system and re-inforced aluminum cast body ready for challenging tasks. Different configurations are available upon request. Fully compliant with **EN 14492**. Additional equipment and accessories are available as well.



Specifications

Maximum Pulling Capacity	: 9000 kg / 19841 lbs
Maximum Rope Length	: 30 m / 98.4 ft
Recommended Wire Rope	: Ø14 mm / Ø9/16"
Hydraulic Motor (High Torque)	: 400 cc / 24.4 in ³
Maximum Pump Flow Rate	: 75 l/min / 19.81 gal/min
Max Working Pressure	: 200 bar / 2900 psi
Weight	: 85 kg / 188 lbs

Additional Equipment

Standard package:

- Rope
- Roller fairlead
- Pressure roller
- Manual freespool
- Hydraulic inlet G 1/2"

Optional:

- Pneumatic freespool
- Radio control system
- ECU & IQAN equipment
- M12 mounting bolts
- Hydraulic control valve with manual lever

Line Pull and Line Speed Performance

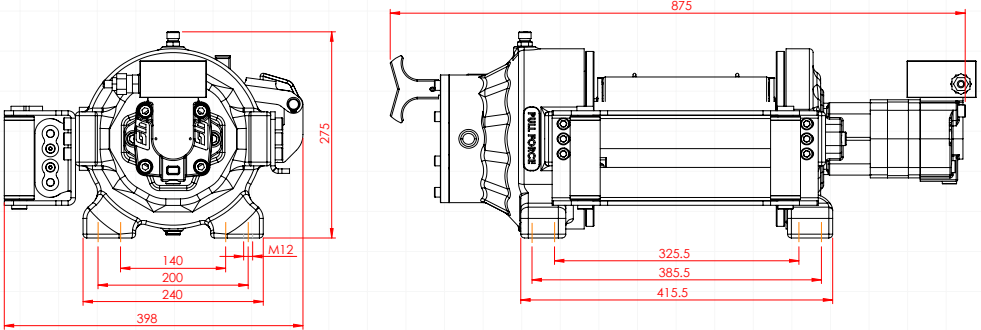
Winding layer	Pulling capacity (kg / lbs)	Rope speed (m/min - ft/min)	Rope length (m/ft)
1	9000 / 19841	13 / 42.6	5.7 / 18.9
2	7164 / 15793	16.3 / 53.5	13 / 42.6
3	5950 / 13117	19.6 / 64.5	21.7 / 71.2
4	5088 / 11217	23 / 75.4	31.9 / 104.7



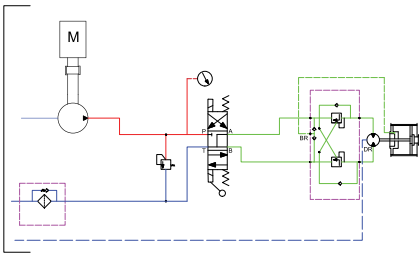
These winches should not be used for lifting and there should be at least 5 wraps of wire rope on the drum. The data shown are for maximum pressure and maximum flow and should be used as a reference only.

PULLFORCE reserves the right to change the specified data without prior notice.

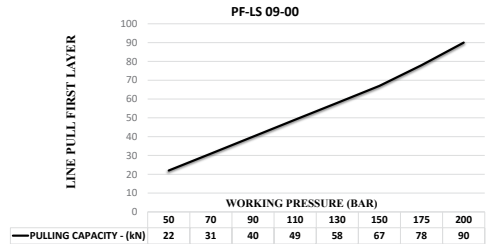
Dimensions



Hydraulic Circuit



Hydraulic Performance



Features

- Gear reduction :** 5.2 : 1
- Gear type :** Single stage planetary
- Winch construction :** Aluminum cast body reinforced with heat-treatment
- Braking :** Negative hydraulic disc brake system
- Drum rotation :** Clockwise, or counter clockwise rotation as required
- Roller guides :** Commercial type with large diameter rollers and grease ways
- Free spooling :** Standard manual lever freespool. Optional pneumatic freespool
- Control valve :** The direction control valves to be used must be A, B, and T. The A and B lines must be open to the T (Tank) line.

Application Areas



Agricultural and Forestry Vehicles



Disaster Relief vehicles



Tow Trucks



Military Vehicles



Offroad Vehicles



Each new winch is guaranteed against defects in workmanship and material defects for a period of 24 months from date of purchase. Wire ropes are not included under warranty.