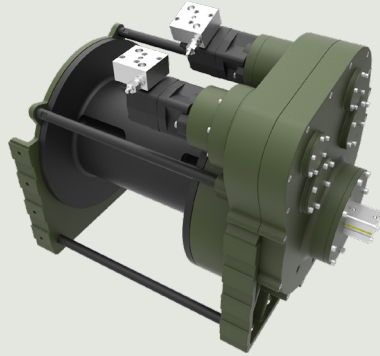




Description

Towing and recovery winch for commercial and service vehicles. This model has a rigid planetary gear, disc brake system and ductile iron body ready for challenging tasks. Different configurations are available upon request. Fully compliant with EN 14492. Additional equipment and accessories are available as well.



Specifications

- Maximum Pulling Capacity : 40000 kg / 88148 lbs
- Maximum Rope Length : 85 m / 278.8 ft
- Recommended Wire Rope : Ø28 mm / Ø10/9"
- Hydraulic Motor (High Torque) : 130 cc x 2 / 12.2 in<sup>3</sup> x 2
- Maximum Pump Flow Rate : 75 l/min / 19.81 gal/min
- Max Working Pressure : 200 bar / 2900 psi
- Weight : 725 kg / 1598 lbs

Additional Equipment

Standard package:

- Rope
- Roller fairlead
- Pressure roller
- Pneumatic freespool
- Hydraulic inlet G 1/2"

Optional:

- Radio control system
- ECU & IQAN equipment
- Double speed working mode
- Automatic roller fairlead
- M24 mounting bolts
- Hydraulic control valve with manual lever

Line Pull and Line Speed Performance

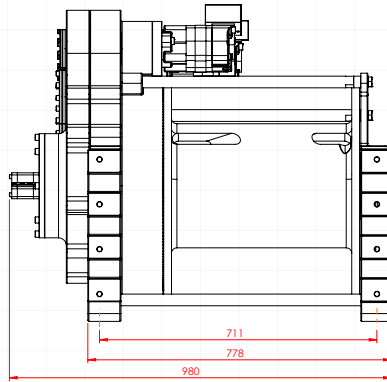
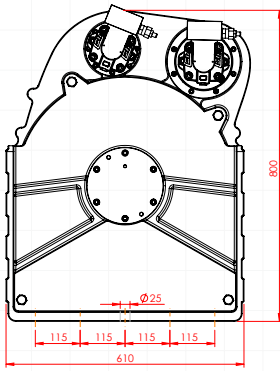
Winding layer	Pulling capacity (kg / lbs)	Rope speed (m/min - ft/min)	Rope length (m/ft)
1	40000 / 88185	2.86 / 9.39	17.4 / 57.2
2	34210 / 75420	3.34 / 10.97	37.8 / 124.2
3	29884 / 65883	3.83 / 12.56	61.2 / 200.8
4	26529 / 58487	4.31 / 14.15	87.5 / 287.2



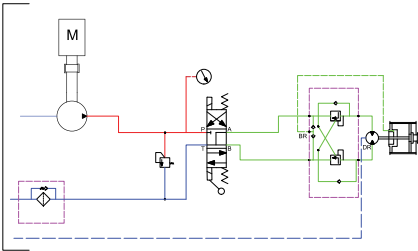
These winches should not be used for lifting and there should be at least 5 wraps of wire rope on the drum. The data shown are for maximum pressure and maximum flow and should be used as a reference only.

PULLFORCE reserves the right to change the specified data without prior notice.

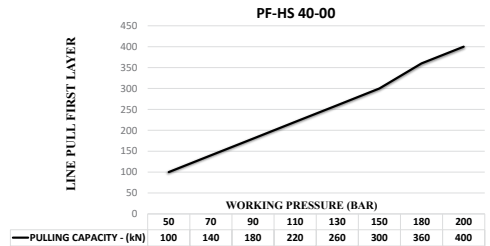
## Dimensions



## Hydraulic Circuit



## Hydraulic Performance



## Features

- Gear reduction :** 110:1
- Gear type :** Single stage planetary with specially designed gear system
- Winch construction :** Ductile iron body reinforced with heat-treatment
- Braking :** Negative hydraulic disc brake system
- Drum rotation :** Clockwise, or counter clockwise rotation as required
- Roller guides :** Commercial type with large diameter rollers and grease ways
- Free spooling :** Standard pneumatic freespool
- Control valve :** The direction control valves to be used must be A, B, and T. The A and B lines must be open to the T (Tank) line.

## Application Areas



Heavy-Duty  
Tow Trucks



Low-Bed  
Semi-Trailers



Towing and  
Recovery Vehicles



Trailers



Offroad Trucks



Each new winch is guaranteed against defects in workmanship and material defects for a period of 24 months from date of purchase. Wire ropes are not included under warranty.